

A GATHERING OF GHOSTS

Here you will find a selection of ghosts from many places close to where I live, including in my own home. They were photographed both indoors and outside, and although they all were taken locally I could have found them anywhere. Wherever people and animals gather, there also will you find spirits.

I hope you enjoy my 'Gathering of Ghosts'.

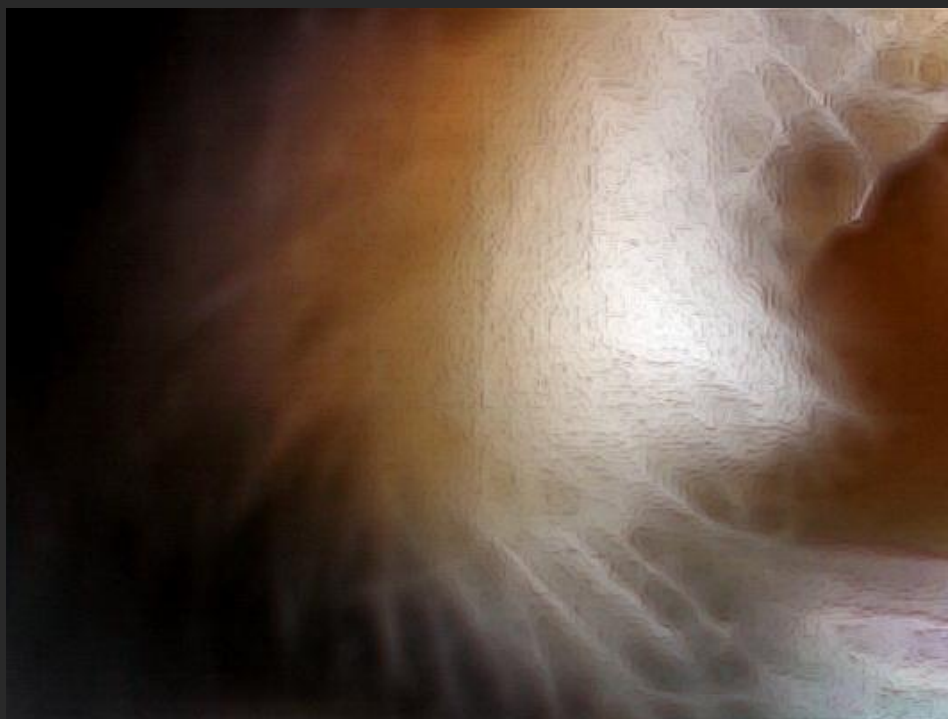


This is a photograph I took as part of a series of ITC experiments I am carrying out on an ongoing basis. Please refer to the 'Your Questions Answered' section where I explain exactly what ITC is and how it applies to my work.

This is a 'Black-Bag Shot', a photograph taken using a reflective plastic black garbage bag that has been electrostatically charged as a backdrop. Amazing images sometimes appear, and this is one of them.

I believe this is more a psychic illustration than realism; this spirit has posed artistically and has taken the form of an angel. Of course, I can't be absolutely sure that this isn't an angel, either.

The large white misty section in the middle is meant to be a wing, folded and curved around. The head can be seen up in the top right corner, looking down. It's seen in profile partially obscured by the fronds of the wing.



The 'glowing edges' program outlines some of the details of this picture, showing the pattern of the wings more clearly. The facial features are obscure, the eye merely a dark smudge, but the hairline, and the line of the forehead and nose can be seen.



Here I've outlined the image in white. The delicacy of the wing design and the structure of the face are more clearly defined.



In stark contrast to the last picture, this one has drama that does not need to be staged. I took this photograph on a cold night in winter. It's of a door attached to the emergency room of Mission Memorial Hospital in Mission, BC, where I live.

I was coming home from the shops and I had my camera with me. I took this photo on an impulse which paid off big-time.

A figure is about to walk – quite literally - through the door, but this is no ordinary hospital visitor.



Sharpened slightly, this phantom figure can clearly be seen attempting to open the hospital exit door. It is obvious from her coat that this spirit is a woman. She has put her hand right through the metal of the door and you can see her hand 'gripping' the door.

What is really interesting to me is the electricity that you can see crossing the image horizontally like lightning. It was a very cold, dry night, the sort you might expect to get little electric shocks when touching door handles. It zips past the glass on the inside, disappears when it reaches the metal and then appears again, this time outside, as the metal ends. This coincides with the spirit touching the metal with the incorporeal substance of her body. I believe that it's her hand touching the metal combined with the cold temperature that in part enabled this photograph.



I applied a 'glowing edges' program that has highlighted details in this picture previously invisible or hard to see. The position of her lower legs is easier to see and her facial features are now vaguely visible.



I changed the color and re-sharpened the image, which has brought out some more details. Both her face and her shoes can be seen more clearly now.



I've cropped this from the original. Can you see where her left hand has passed right through the door? I wonder what her story is. Perhaps she passed away here and doesn't yet realize it.

She could also have worked here at one time and be deceased, although I believe in this instance that this is not a 'memory' recorded at this location but a real-time event involving a spirit.

Another possibility is that this lady is not dead, but out of her body (OOB) when I took the picture. An example of this might be if she were undergoing surgery, unconscious or sleeping at the time. If she were worried about someone in the hospital, for example, she might check on them while she slept.



Edited, you can see her face now. She appears to be looking towards me. If she's passed on and doesn't know it, then she might be wondering why I'm so ignorant as to stand there photographing her, but of course I couldn't see her at the time the picture was taken. I was looking at an empty door.



A grassy roadside scene with hedge and trees has an unexpected extra in it. A ghostly child leans over the top of the hedge and peers up the road. It's interesting that like so many children he has a stick – which is also ghostly.



A close-up of this little boy and his stick reveals to me something else that children like to spend time with. It's to the left of him in this image, next to his head.



Re-cropped and sharpened slightly, here is the psychic image close-up. Can you see the dog's head next to the boy's on the left? Both the boy and the dog are looking straight towards us, but there's a basic difference in the way the images are rendered that gives rise to some interesting questions.



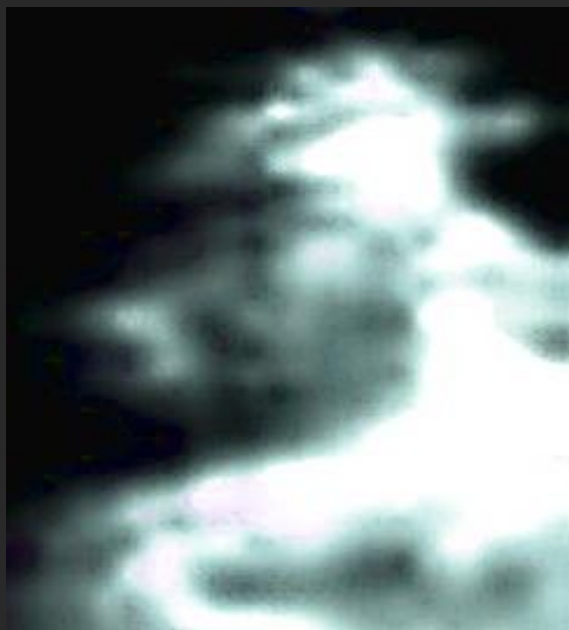
I've outlined the image so that you can see what I mean. The dog can be seen on the left. It's slightly distorted, being photographed through time and space as it is, and looks a little like a bear, but its composition is mature and realistic in style. Not bound by the same rules as we, sentient spirit beings can appear in many forms. I've noticed that some children appear most realistic, even photographically so, while others seem like cartoons or caricatures. Could this be because some children have only a vague idea of how they themselves look, perhaps being focused almost entirely outside of themselves, as many of them are in life?



Adjusting the image to match flesh tones here immediately renders the dog more realistic and shows clearly the cartoon-like qualities of the boy's face.



To better demonstrate these qualities, I've edged the image to make it clearer. The child's face is angled slightly so we don't see it quite head on. Round and with oversized rounded eyes, small rounded ears and a hairstyle that leaves the impression of an identifiable cartoon style, it looks incongruous next to the more life-like dog. Whatever the reasons, it seems this little boy retains the stick and beloved animal companion and playmate of his earthly life.



Here is a strangely haunting image for you to look at. I found it on one of my 'Black-Bag' shots. It could be that this belongs in the 'Musical Echoes' section of this presentation, which deals with scenes I have captured of musicians on stage, but I can't find the usual microphone and other clues associated with that particular phenomena.



The reason I suspected his involvement in the music industry was his theatrical look, complete with eye cosmetics. It could also be that he was a ballet dancer, a pharaoh, in theatre, or any number of other things.



A close-up of this man's eye reveals careful application of eyeliner across the top lid and outwards to end in an artful spiral.



Another edit of the man's image cropped from the original photo at a larger size.



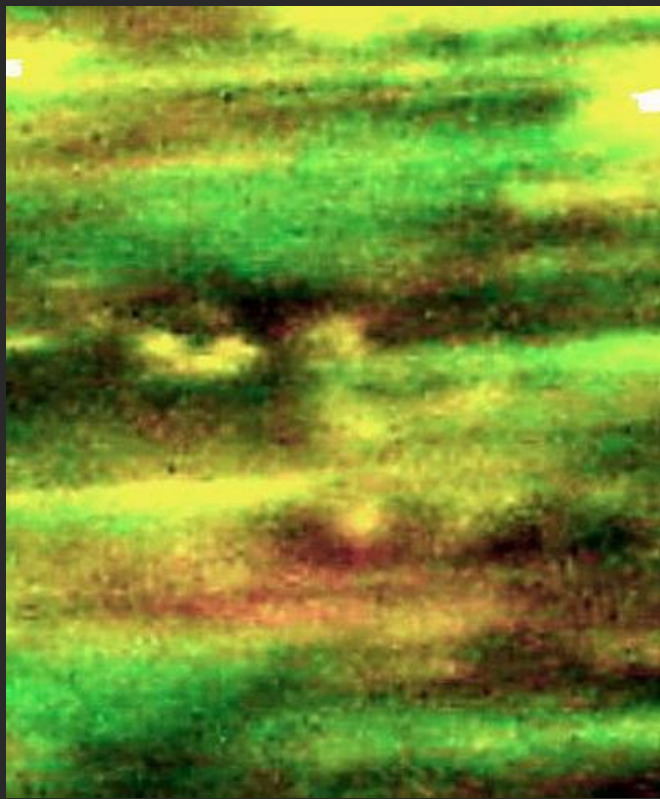
The face
seems both
decadent and
arrogant as it
stares down
haughtily.



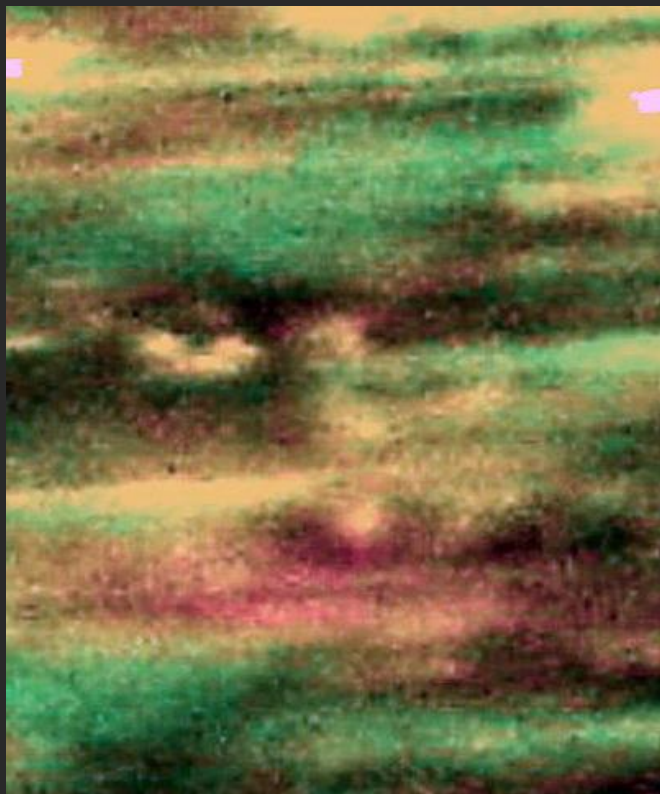
Here I've
outlined and
sharpened
the image.
Despite this
faces
femininity, it
obviously
belongs to a
man.



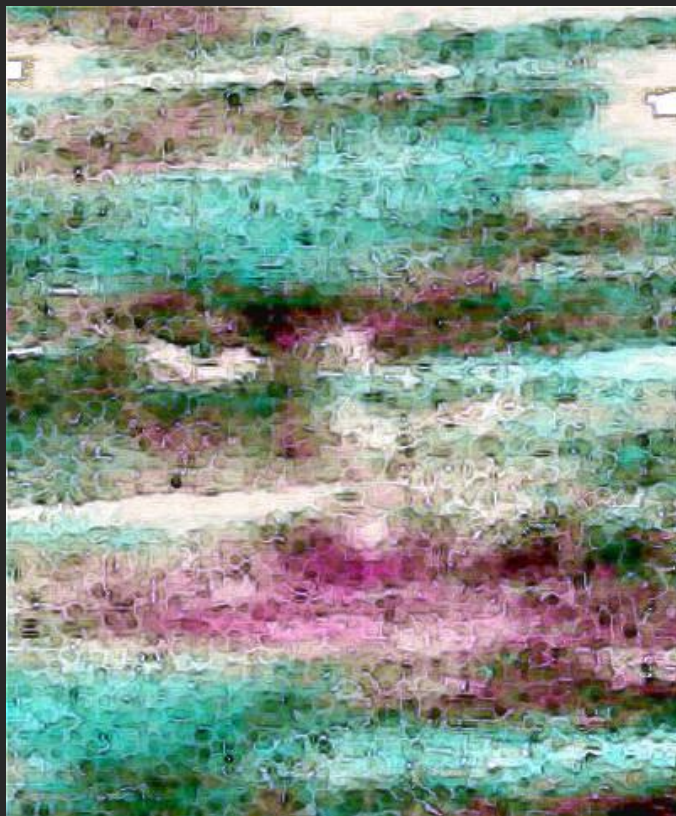
Now as clear as I
can get it, a
'glowing edges'
program fills in the
features of the
unknown man. If
anybody
recognizes him, I'd
appreciate it if you
would email me
and let me know
who you think it
might be.



This face was staring out from behind some bushes in a field on a photograph I took in a rural area.



I took some of the yellow out of the picture to 'normalize' the features and give me a better idea of what I'm seeing.



I lightened the image and applied 'glowing edges' to outline the man's face. The eye on the left of the image is clearer as the white is clear, but the one in shadow on the right-hand side is also visible and I'd like to see it closer up.



Here's the eye on the right of the image cropped out. The pupil is very clear. I'm not sure if this is a human eye or not.



This misty face appeared on a photograph I took in my bedroom. It filled almost the entire picture and displayed in multi-colors. If you can't see the face yet, bear with me while I edit it.



I adjust the color until I can match skin tones as closely as possible to allow the face to emerge. It's still hazy and unclear.



I have edited the image quite extensively until the face of this young girl emerged, but it's still a little too dark.



Now you can see her more clearly. Her eyes and most of her face are visible. The pink smudge near the bottom of the picture in the middle is part of her mouth. It seems as though she is displaying both a front and side view of her face at the same time, unless there are two people present in the image. They seem to merge.



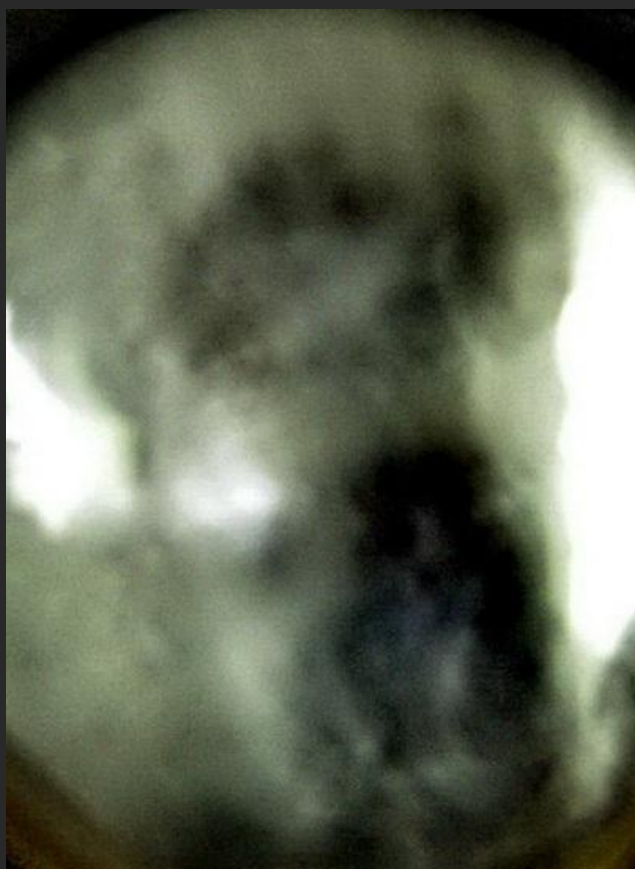
Cropped and enlarged, this should make the face very clear. There's a little distortion of the image, but that's to be expected. It would be very difficult to photograph through time and space without some warping occurring.



Outlined to fill in details, this is as clear as I can get it. This picture is amazing under the circumstances. I wanted to show you how much more of the image you can see using editing techniques.



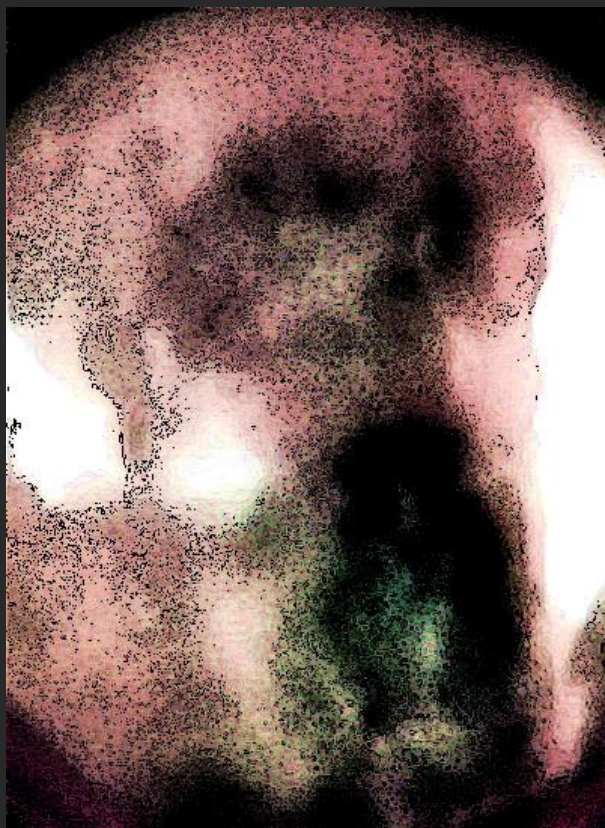
This is a photograph of a quartz crystal ball that I own, demonstrating that although what appears in the ball can only usually be seen by psychics, it can sometimes also be photographed. This allows those who have not yet activated their psychic abilities to get a peep at mysterious 'Otherworlds' once in a while. The man gazing out from the crystal fills almost the entire sphere.



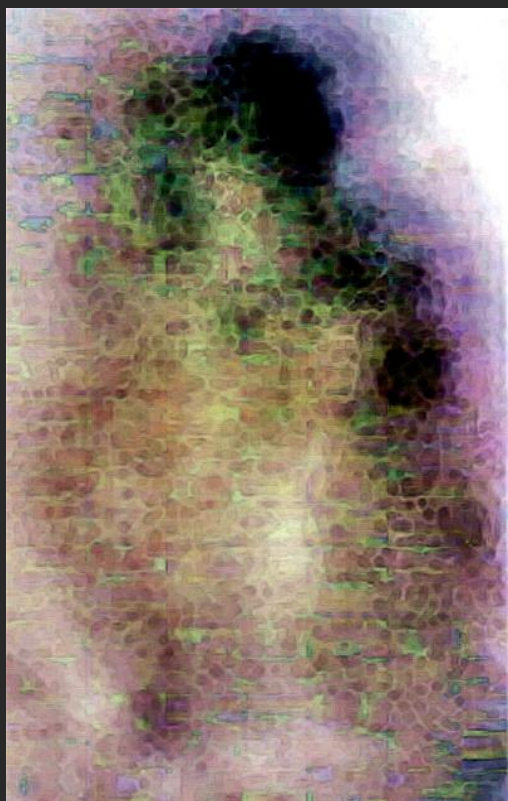
Cropped out and enlarged, the face is clear enough to recognize, but I don't consciously know this man. Because he appears in the ball is not necessarily an indication that he has died. He may have a beard but I've learned how deceptive these images can be and I think I can see something else.



I've applied a pale edging to everything so you can see that there is a formation in the actual mouth area. I'm going to look more closely at it. On my paranormal photographs there are many layers of imagery and sometimes while editing one image I 'break through' into another image. For a description of this phenomena and information about the true nature of the photographic image, please read the article 'About the Photographs'.



This is a differently edited version. I can still see a structured shape of some sort so I'm going to crop the section near the mouth area from the original unedited photo and edit it separately.



The cropped section when edited reveals a form very much like a vase of flowers. I've outlined the image gently with edges so that you can see the shape.



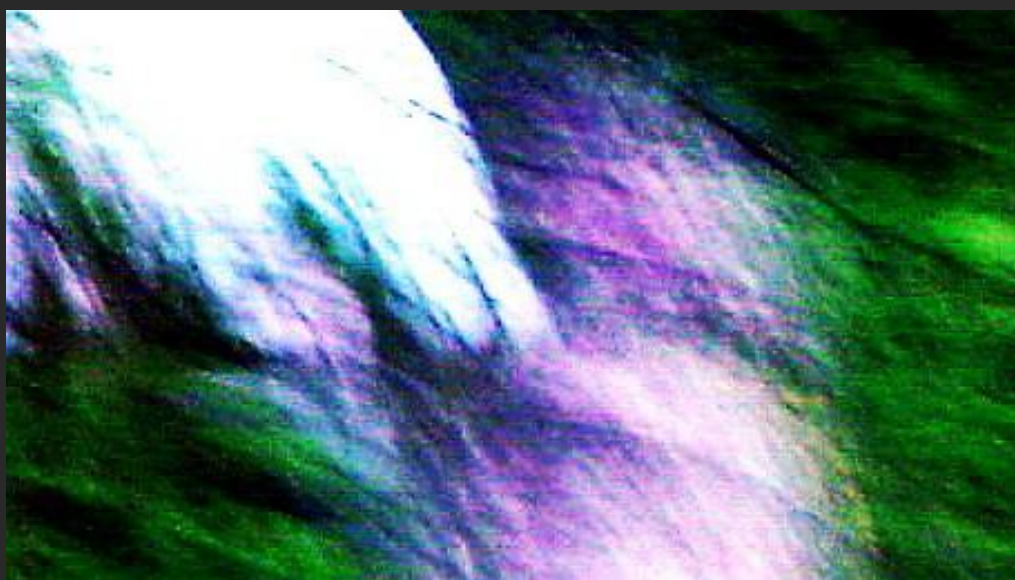
Further editing reveals the faint but clearly discernible vase with a large bouquet of flowers in it. So before you disbelieve the crystal ball gazer who told you that they saw a dark stranger and flowers in your future – think twice!



This is the 'Washing Line Ghost' that everybody likes so much when they first see it. It definitely has its own charm. I photographed this anomaly in a Mission garden. There was in reality no woman, no washing line and no clothing hanging. I believe I've captured a past scene, a moment 'frozen' in time at the instant it was recorded so strongly on the immediate surroundings. Or perhaps this lady stood here hanging out the washing and thinking deeply many times until she made an impression in that area of the garden.



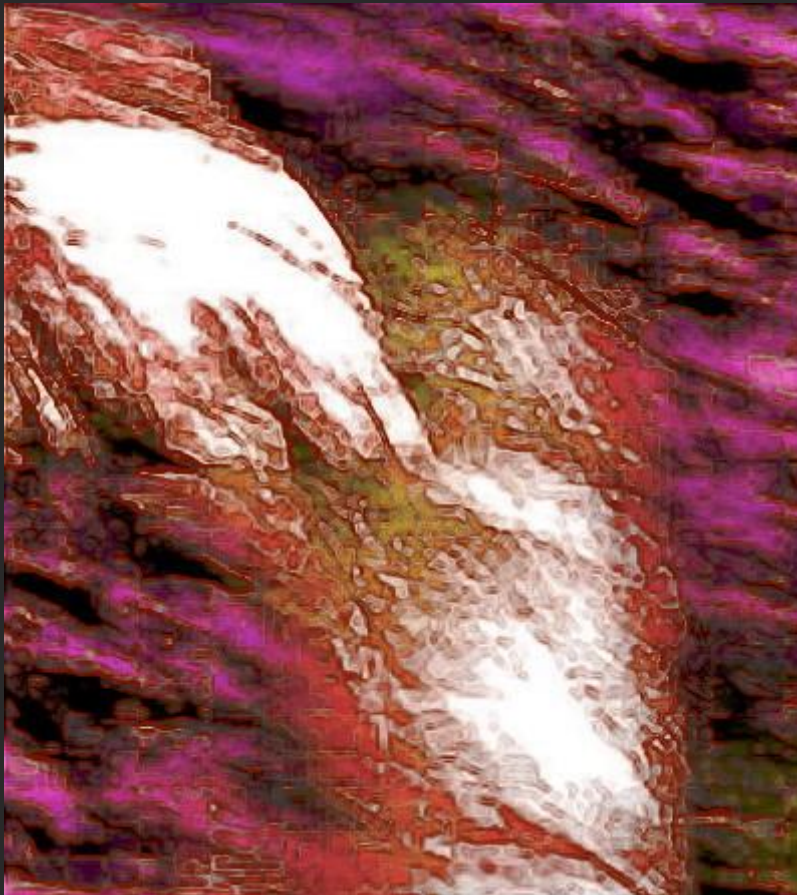
I've outlined it a little so you can see it more clearly.



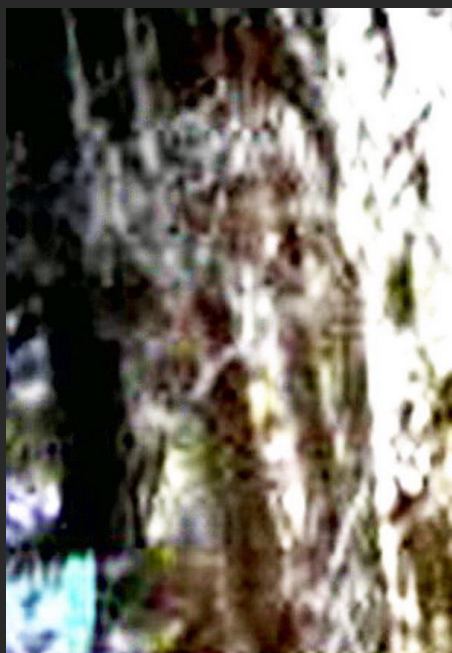
This is a cropped section showing the head and upper body of this woman as she reaches up to the washing.



Here I've changed the color scale completely so that I could try and extract more details from the image.



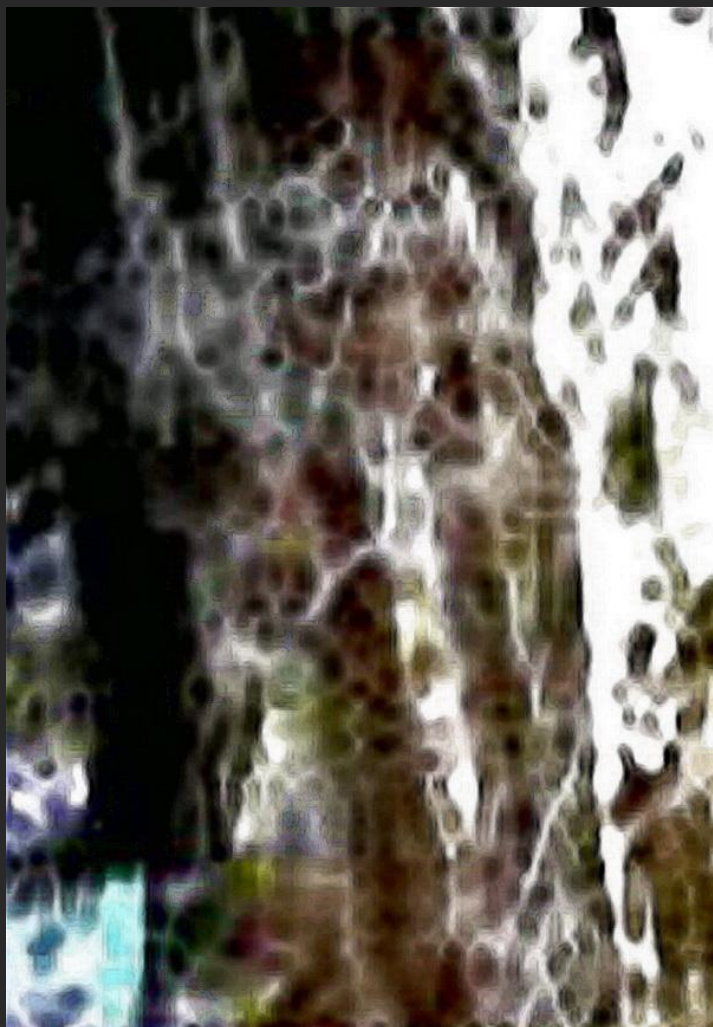
This is reasonably clear, and you should now be able to make it out. Strong emotions frequently leave a semi-permanent and more powerful than usual impression on their immediate surroundings, which can include objects, places and landscape. These types of emotions include strong love and spirituality, rage, violence, joy, hatred, fear and suffering. People who are sensitive to such conditions can find themselves at times deeply affected by such atmospheres.



A face appears
against the
trunk of a tree.
I find that trees
provide both
entrance and
exit points for
spirits, who use
them as
doorways.



Glowing
edges
outlines the
image. The
left eye is
visible.



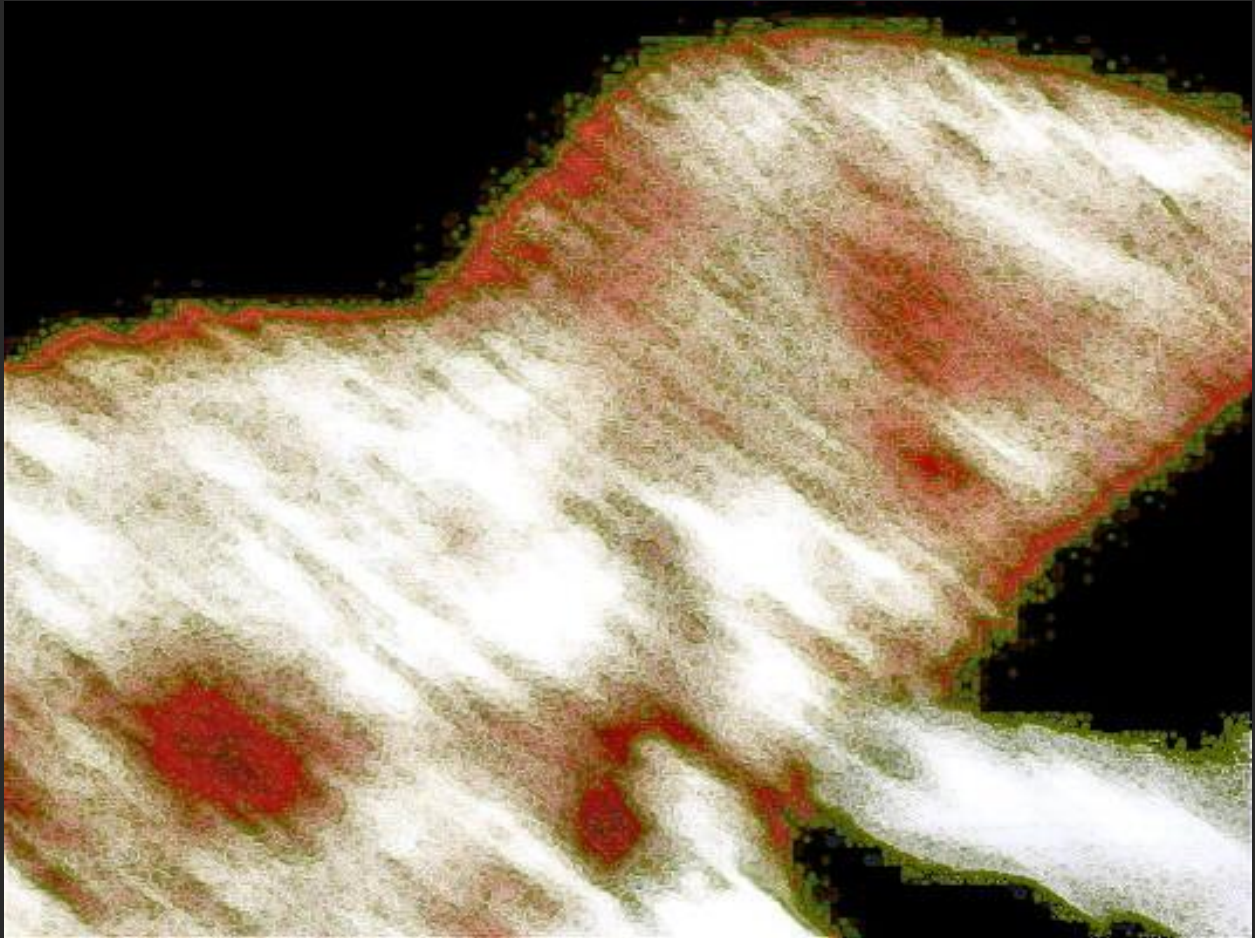
Sharpened and further edited the face can clearly be seen superimposed over the tree. You can see the faint facial features. Other figures and faces can be seen vaguely within the image.



This is a 'Black Bag Shot' photograph that's part of my ITC experimentation. A figure can be seen turned towards the right. The head and shoulders can be seen. The face is in profile.



I've lightened the image so that you can see the faint facial features.



I think you can see this is a young man. From the position of his right shoulder and head he may be playing a guitar. He is possibly also smoking a cigarette from the look of the smoke-like cloud coming from the mouth and nose area.



This photo I took of an embankment at the side of a rural road in Mission turned out to be one of the creepiest pictures I have taken. Usually none of the images that turn up on my photos bother me at all. I'm used to the varied ways that spirits display themselves. Sometimes they even appear with injuries that one might reasonably assume were something to do with the cause of death. Not always pleasant and sometimes outright sad or poignant, I still don't find them creepy. This one is an exception. If you look just to the right of the center of the photo you'll see a grey shape that seems to be hanging in the hedge. I'll crop it.



This is the shape in the hedge. Two things are immediately apparent to me: A human figure with its back to us dressed in pajama-like clothing is struggling in the hedge as though trying to climb through, and something looks very peculiar in the head area.



I enhanced the image slightly and it looks as though this person is being attacked in the head area by a large bird of some kind. I also see some proportionally smaller faces around the figure's left shoulder.



This is a negative version, and you can see how this person is crawling up the embankment.

The little faces are clearer now around the left shoulder, so perhaps you can see them now if you couldn't before. Also, sometimes the image, or part of it, is clearer in negative. I don't know why and there are no clear guidelines for this. We simply don't know enough about it yet.

The creature at the person's head looks very much like a bird, perhaps a hawk. The outspread wing is very clear on the left. I can also see what it is that's been confusing me.

I can now see the person's pony-tailed head as well as the bird. Their black hair is tied back.



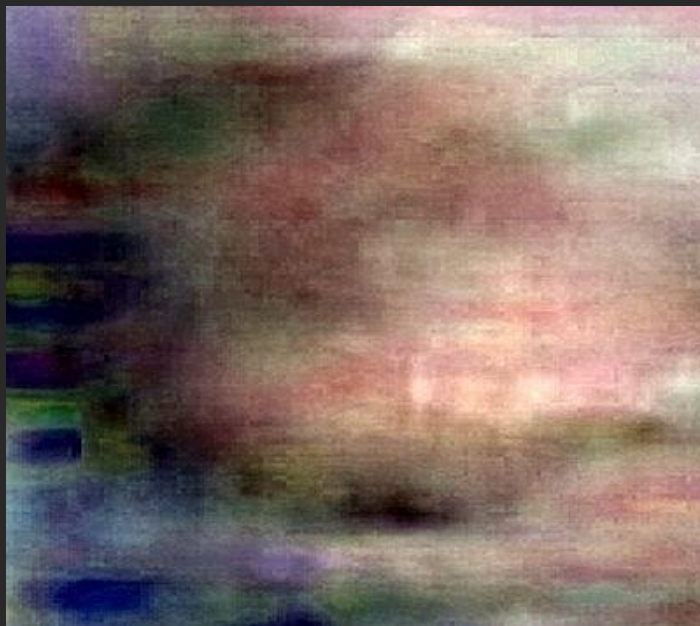
I applied 'glowing edges' to the image so I could outline the entire anomaly. The body's head is visible. It's intertwined with the bird and colored blue. I can see that it's turned towards us, something I hadn't realized, so I can probably discover more if I crop it out.



Here's the strange area around the head. The white area is the back and shoulders. On top of this lighter area is the strange open-winged bird. Superimposed over the bird is a blue area which is the figure's head turning towards the viewer. The head is topped with black hair that seems to end in a ponytail.



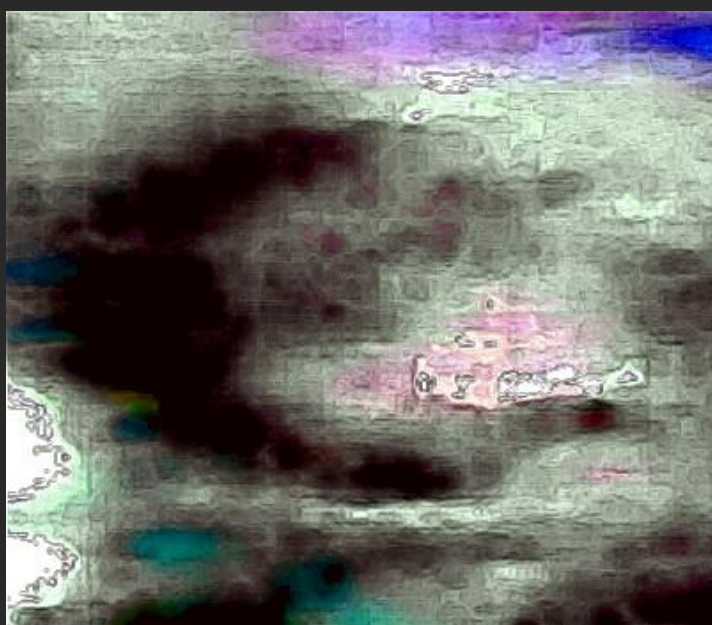
I've lightened and sharpened the picture. You can just see the phantom's eyes, particularly the right one. The two little heads next to the entities left shoulder are now clearer too.



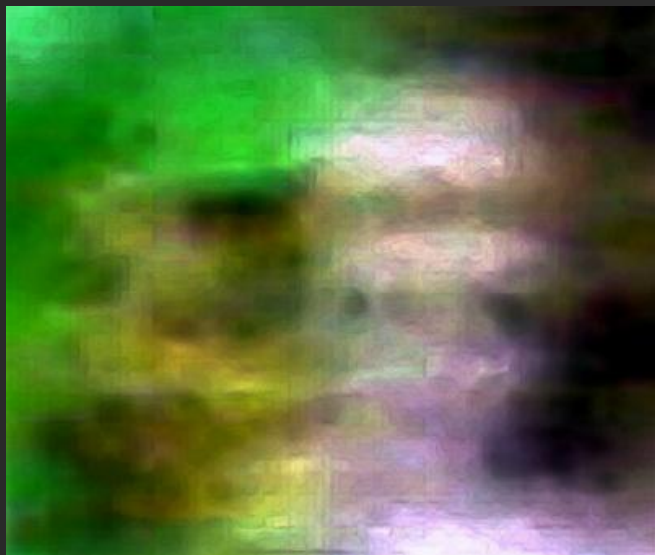
This is the head of our hedge ghost. I've tried to 'normalize' the colors so that you can see it better.



Glowing
edges
outlines
details
and you
can see
the eyes
looking
back.



This is a
differently
edited
version of
the face,
which
seems to be
wearing
eyeglasses.



These are the little faces found at the shoulder of the pajama-clad ghost. I'll try to make them clearer.



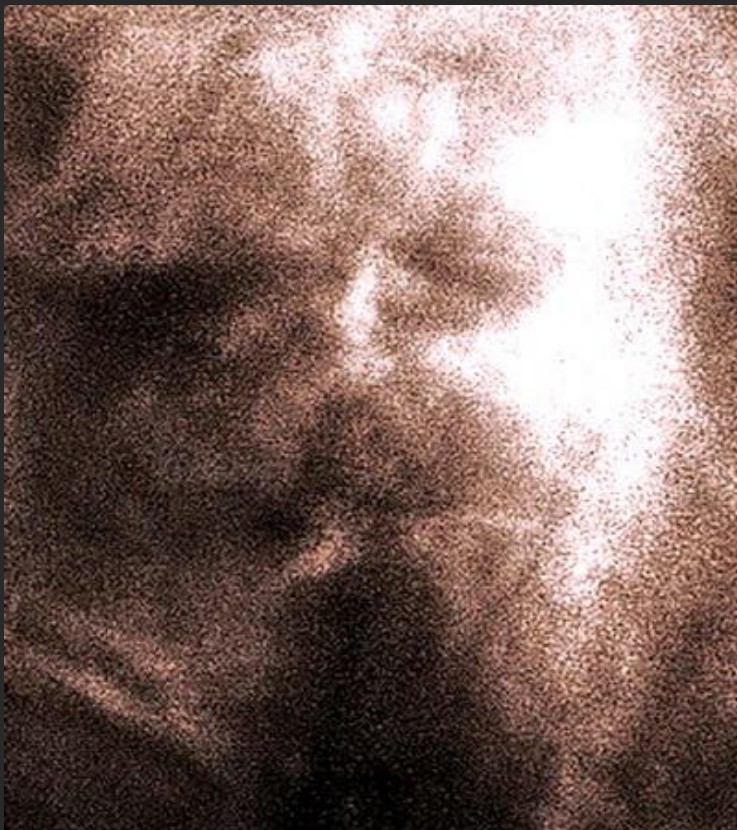
I've created a negative of these faces. The blue face is just discernable, and the green one on the right is darker, but you can see where the eyes and other features are, even with the distortion.



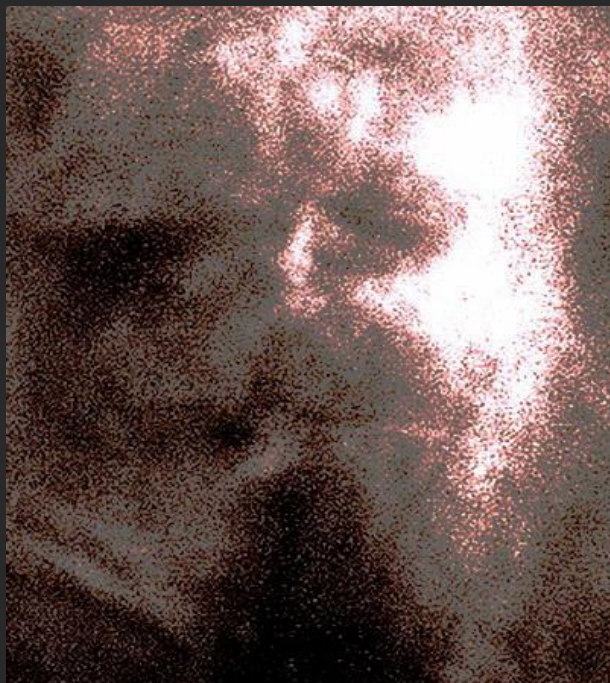
Adjusting the color, exposure and sharpening the image makes it even clearer.



The final image, I applied 'edges'. Now you can see the eyes and mouths are indeed real and these are faces.



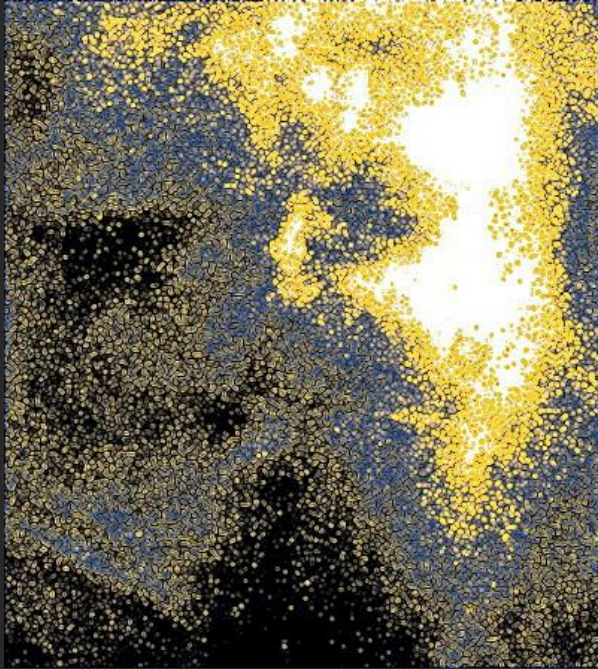
This is a psychic photograph of someone I knew. The image was taken about eighteen years after he passed away. I'm not sure, but I think that's a 'cigarette' in his mouth. Admittedly, it's not a real smoke, but deceased people have the tendency to appear, whether in front of us as apparitions or on photos, as we remember them, sometimes displaying old habits such as wearing a familiar hat, smoking or appearing with a symbol such as a favorite flower.



There are several ways to edit something like this. Using a 'curves' program as I have here allows half the image to be seen more clearly. Also, tiny points of light can be seen in each eye. I've learned this is significant.



Further editing has revealed the other side of the face. It is a little strange looking at the face of someone you knew well while alive, across time and space.



Many artistic programs can be used to reveal things in paranormal photos. In no way am I suggesting that this be used as proof. On the contrary, they are tools for exploration, experimentation, and self-education.

Editing and using enhancing programs are very different from actually adding or removing content. Enhancements, although changing colors and sizes slightly, can only show up things that are already present in the image.

Although the face has been stretched in width a little on its trip through time and space - a little warping is to be expected - it is still instantly recognizable to those who knew him while he was alive.



Here's another type of face entirely. This image is cropped from down the entire right hand side of the picture vertically, so this was the edge of the original photograph. I think it's a man's face, but I can't be certain.



The strange white shape at the top contained some very strange imagery but in this instance I want to concentrate on the amazing face found in the bottom right corner of the picture. It's in semi-profile, and just over half of this face can be seen, the rest would have been off camera.



Cropped out, this person gazes ahead towards some unknown point.



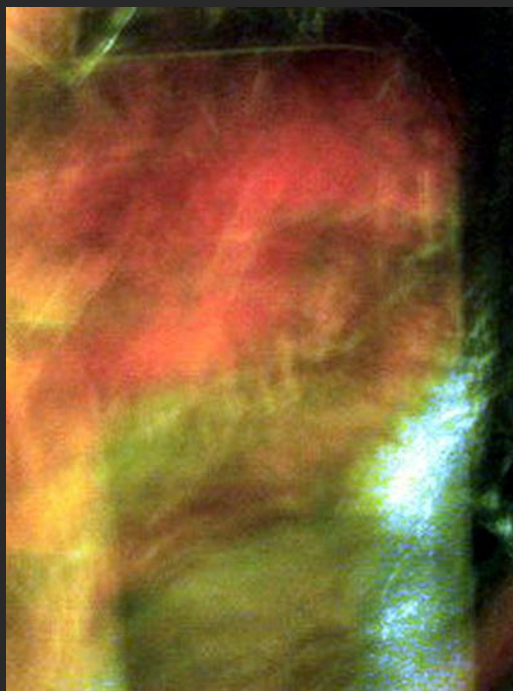
I edged the image to make it look more solid. This also tends to highlight certain areas I might not have otherwise noticed. I see something else in the face area.



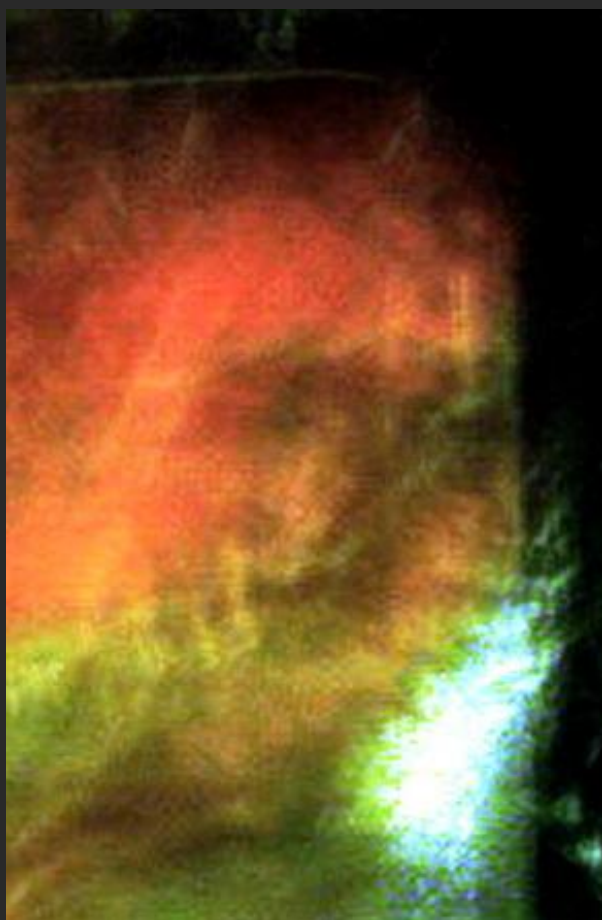
It's common for me to find many overlays of imagery layered together and often nested within each other, like Russian dolls. I have discovered how to edit through these layers and extract some of the visual data. In this instance there is another scene within the face. I'm not going to edit it for this presentation. I've many examples of this kind of phenomena and I've worked with some of it extensively. A portion of this work will be made available on other presentations.



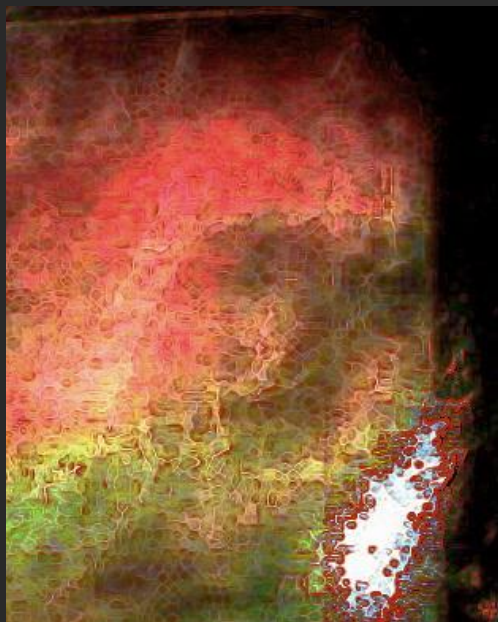
This photo was taken in my home. It was a random shot, taken with the intention of trying to obtain spirit phenomena, and it was successful, as it often is. The scene is full of psychic content, and if you look closely you will probably be able to see it. It's a little like finding objects hidden in pictures, a game children love to play. I've also found it makes them adept at being able to spot anomalies in photographs. I'm just going to examine the main content here, which is the apparition of a teen or adult male visible from the shoulders up. The image is fairly large and is in the lower left corner of the photo.



I've
cropped
this spirit
out. He
walked
right by me
looking at
me as I
took the
picture.
Can you
see him?



Re-cropped,
his head is
now the
focus of
attention.
I've
sharpened
the image a
little.



I've edged
the picture
to make his
features
clearer.



Another face that appeared on an indoor shot, this one, seen in the middle
of the picture, was very tiny, as you can see from the qualities of the image.



Re-cropped,
it's misty
but
apparent.



At first I
thought it
was a
picture of
an adult,
but after
editing it
looks more
like a small
child.



The face now has an almost doll-like quality that some people may well find eerie, but it probably belongs to a very small child.



This cropped image is of a small child. After coming back from a Sunday spent taking photographs I took a last one on impulse. It was of the outside of a window on the upstairs landing of the townhouse where I used to live with my family. When I looked at the photo later I found the image of a little boy staring down from the window.



Outlined, this toddler is even clearer. I could see in the original photo that he was carrying something, and I can see now that it's a little toy duck.

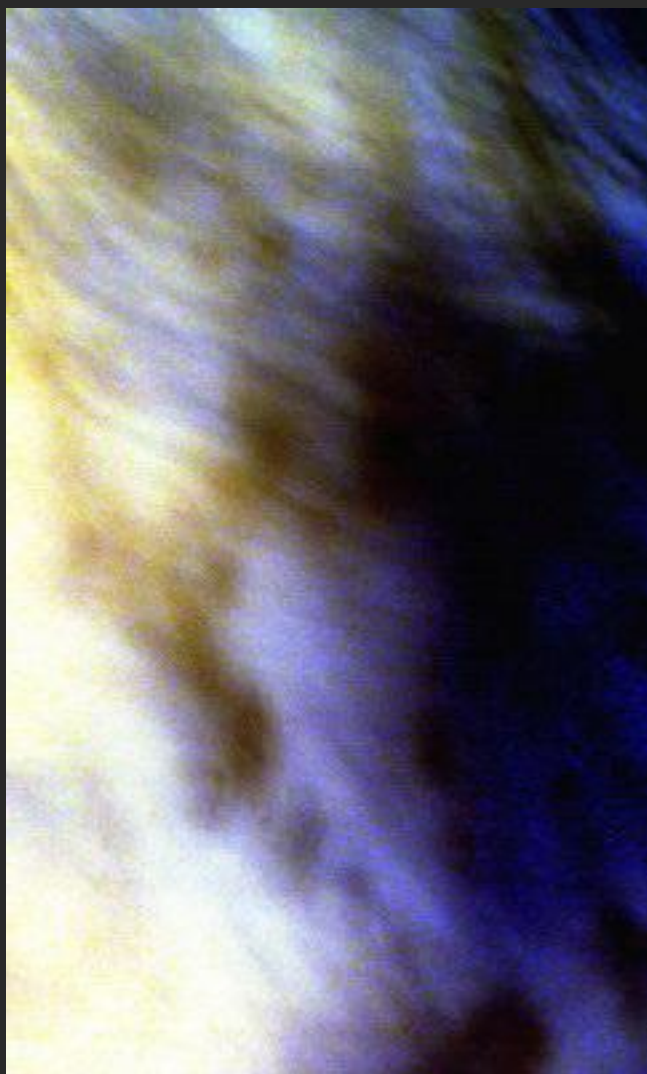


Sharpened, I can
see the little boy
clearly now. I
have no idea
who he is or was.
He could well be
clutching a
rubber duck,
because the
window is near
to the bathroom.
I don't know
what event or
process could
have impressed
this image so
clearly on the
surroundings,
but it seems
poignant.

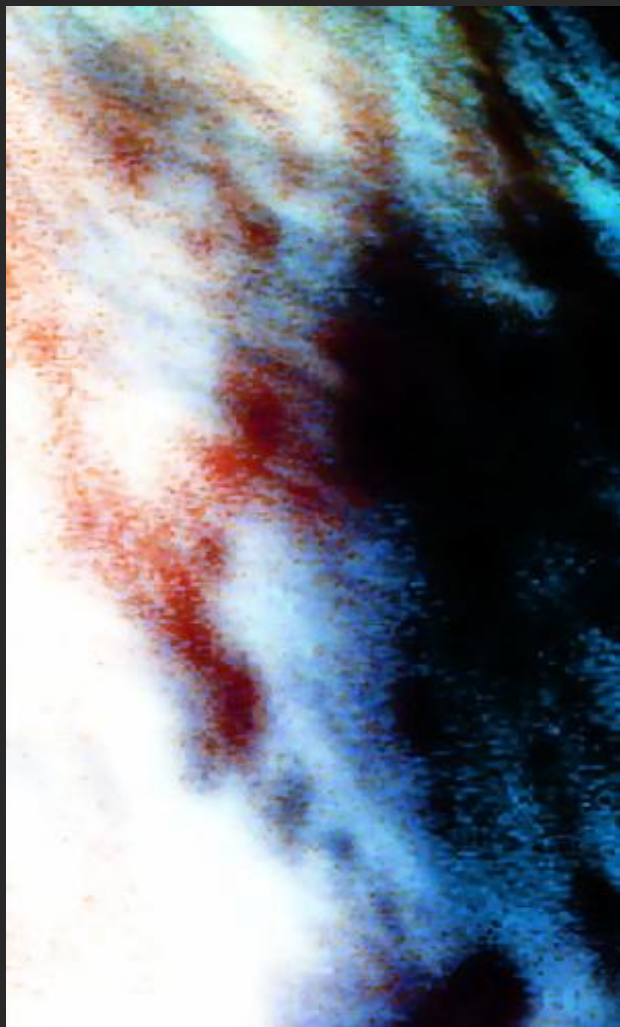


This is another 'black-bag shot', and it was a startling success. This is a negative image of the picture, because that's the way this one was designed to be viewed.

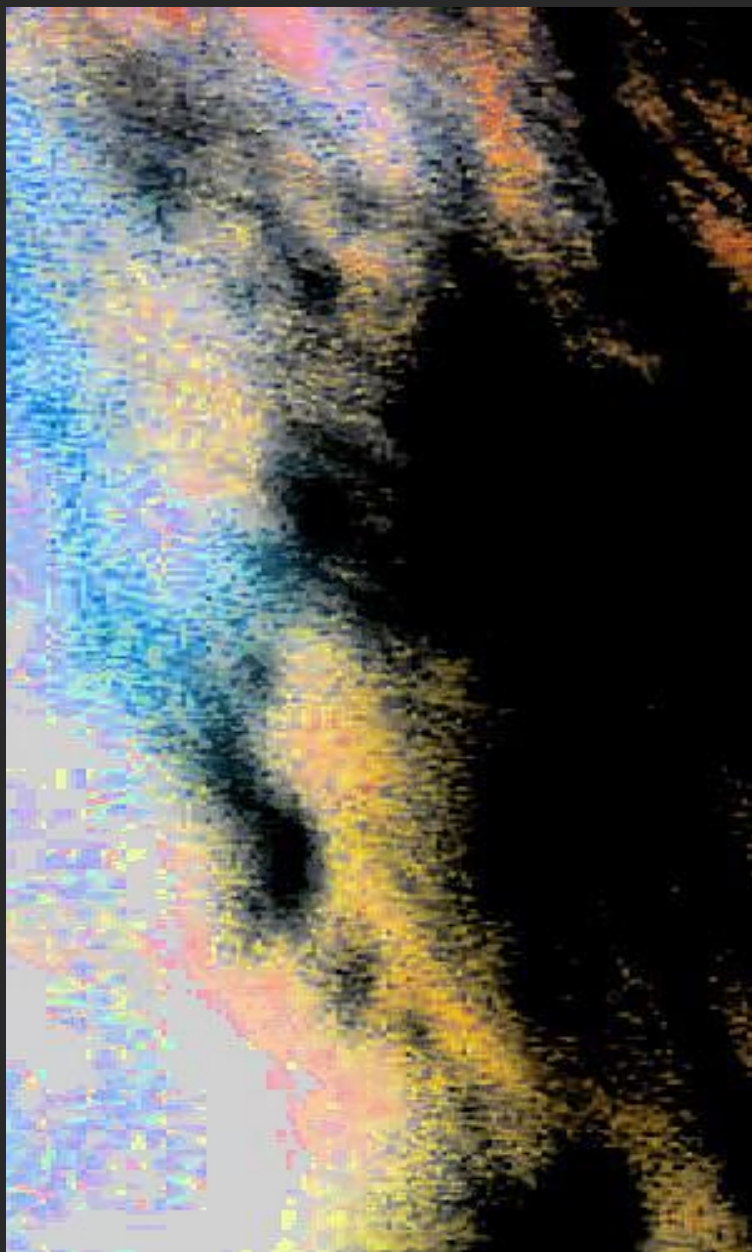
A certain percentage of the psychic images I find do not become clear until viewed in negative. After realizing this I can sometimes edit them successfully in positive again by adjusting the color. There's a lot going on in this image, but I want to show you an amazing spirit face. It's centered in the right half of the photograph.



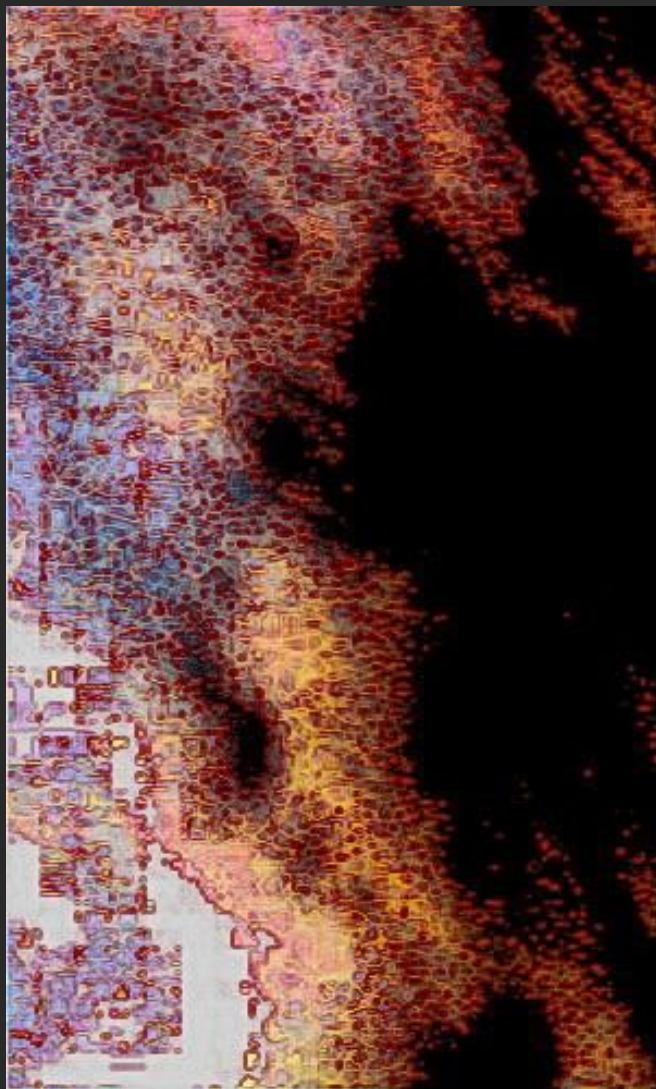
Here is the face
cropped out.
It's viewed in
profile, looking
to the left. If I
had left it just
as you see it
now, it would
appear that the
man we are
looking at has
his eyes closed,
but it's more
interesting than
that.



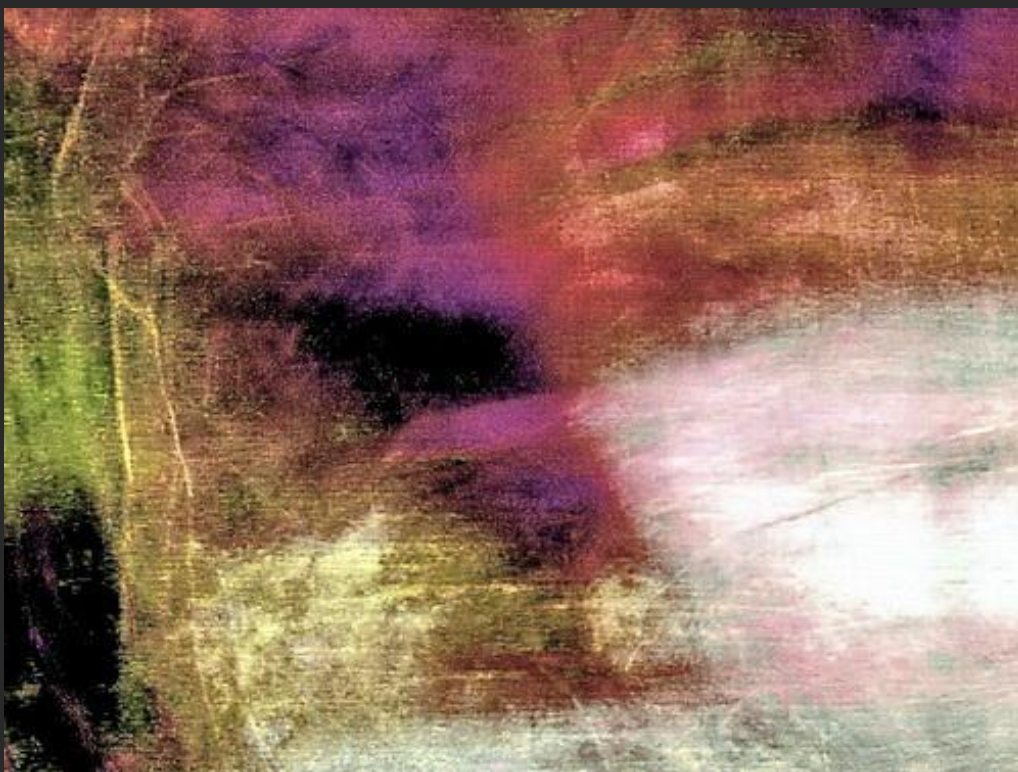
After editing quite heavily, I realized that this person's eyes might actually be open. The red speckling is caused by editing. My photographs are covered with a psychic mist. It seems that this mist is connected to my abilities as a psychic photo-medium, and when combined with light and sometimes movement partially enable my special photography.



I edit again
and try to
approximate
a flesh-tone.
Even with
the blue
'interference'
I can see
that his eyes
are open,
and he is
very young,
probably a
teenager.



I use the 'glowing edges' program to fill in some of the details and see that this is a boy resting his chin in his hand while looking down in the recognizable way of someone either reading or deep in thought. Like most of the people I photograph, I don't know him.



This is someone I might not care to know. It took me a while to see that there was a face in this picture. It was taken outside. There are trees on the left, but they soon give way to a smear of light and color which is normal for my photos.



I've sharpened the image, which reveals a little more. I found numerous anomalies within this one photo, not all of them pleasant.



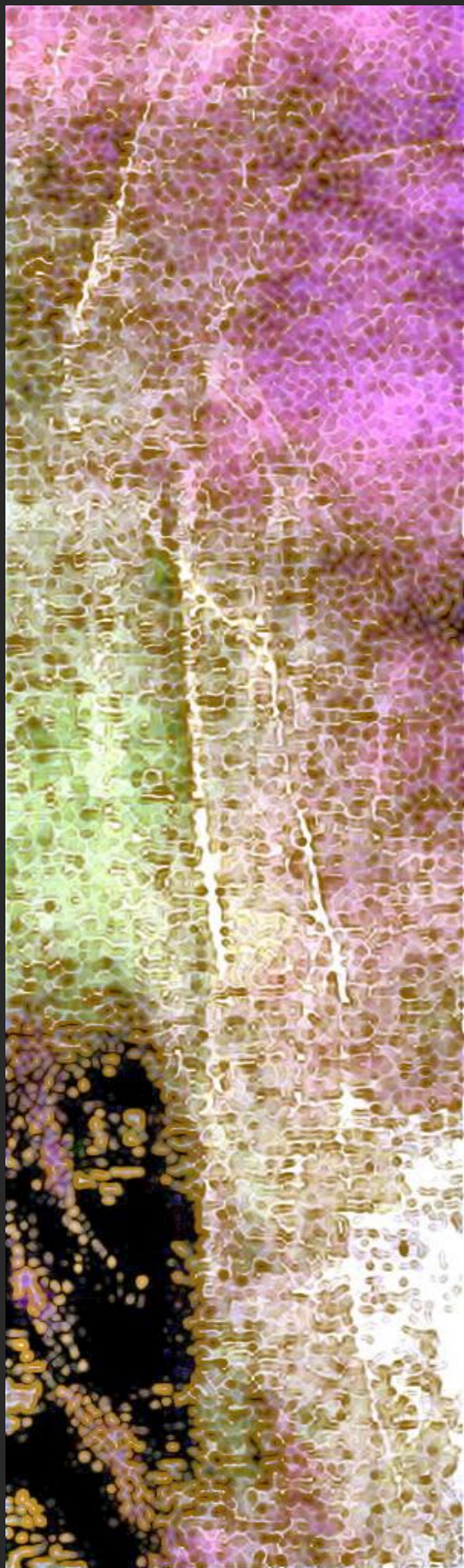
I created a sepia image that is probably easier to see for some people. The extraneous color tends to confuse the eye. The man's face takes up nearly this entire photo. As I said, there is more to see on this photo so I'll show you one more thing. In the bottom left corner of the picture is a dark shape.



I lightened the image and this has certainly revealed the man's right eye as a black shape, and also the form of a girl in the lower left of the image.



I re-cropped from the first image and I included a larger slice because there is a strange sketch-like figure in a very tall hat standing looking disapprovingly down at this girl.



I've
lightened
the image a
lot and
applied
glowing
edges. You
can see the
figure better
now and
you can also
see the girl,
and this
doesn't look
too good.
There is
something
around the
girl's mouth.

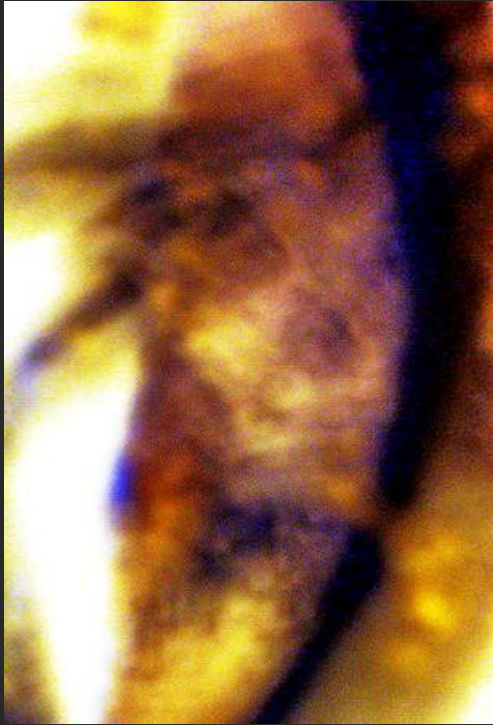


I've cropped the image of the girl. The size is small so resolution isn't good, but as it's a ghost photo, it's amazing anyway.

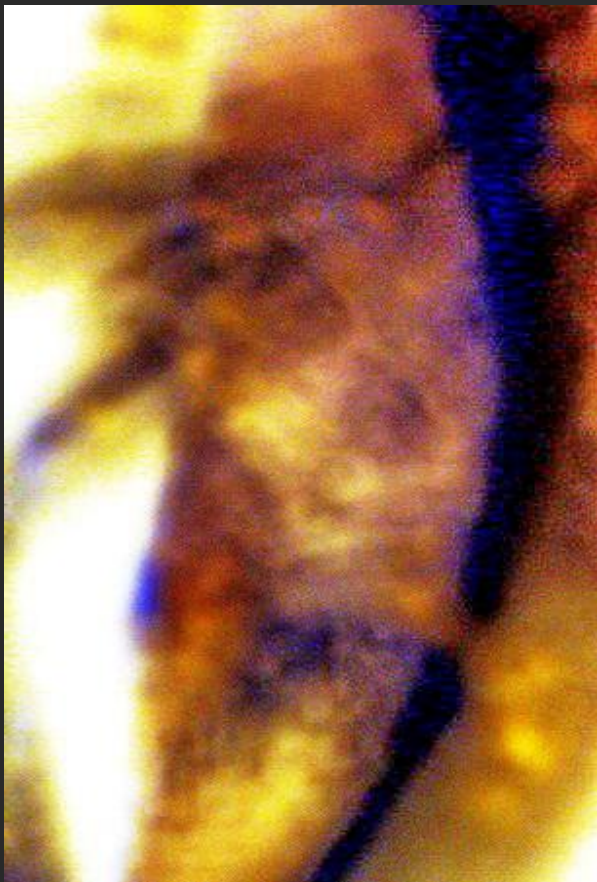


As clear as I can get it, this girl appears to be gagged.

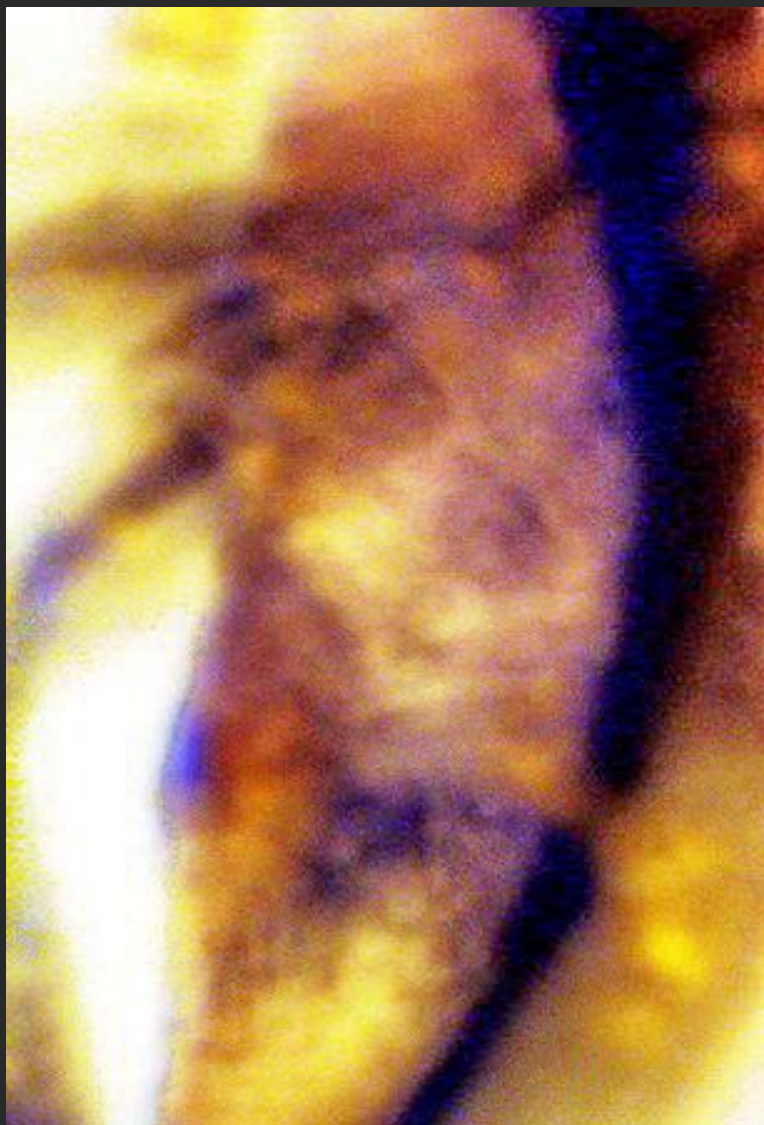
I have taken photos of sinister scenes several times. This isn't surprising considering the things that occur in our world. Disturbing and worrying, there is nothing that can be done about such images other than saying a prayer or blessing for the possible victim. In no way are any of these images proof of anything, but violence and fear imprint extremely strongly in the location of the event that generated them.



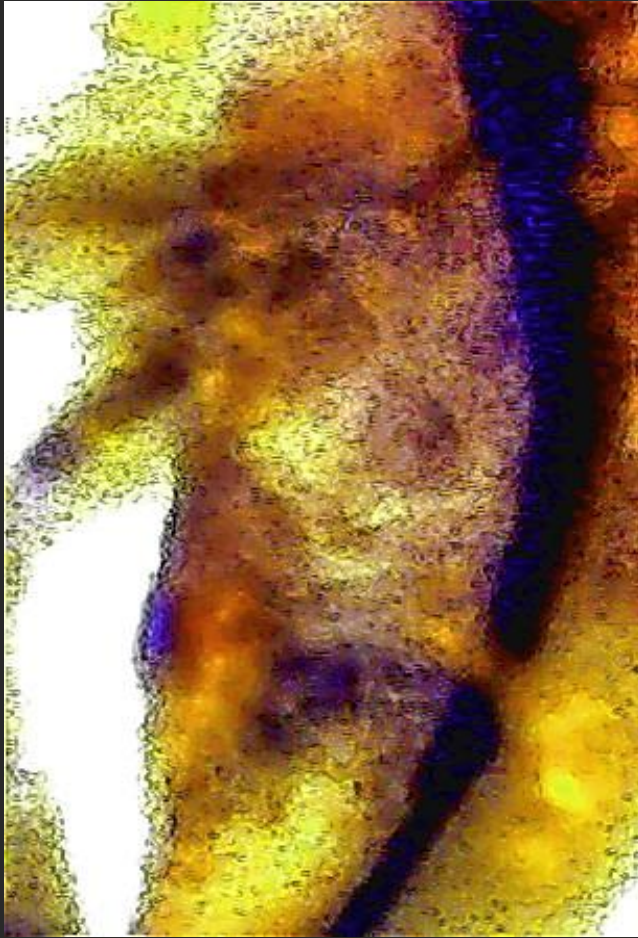
A strange image found on a 'Black-Bag Shot' and cropped out, it turned out to contain many images within one, but the main anomaly is that of a man wearing a hat with feathers in it on his skull-like head. It's quite large and can be seen in the approximate center of the image.



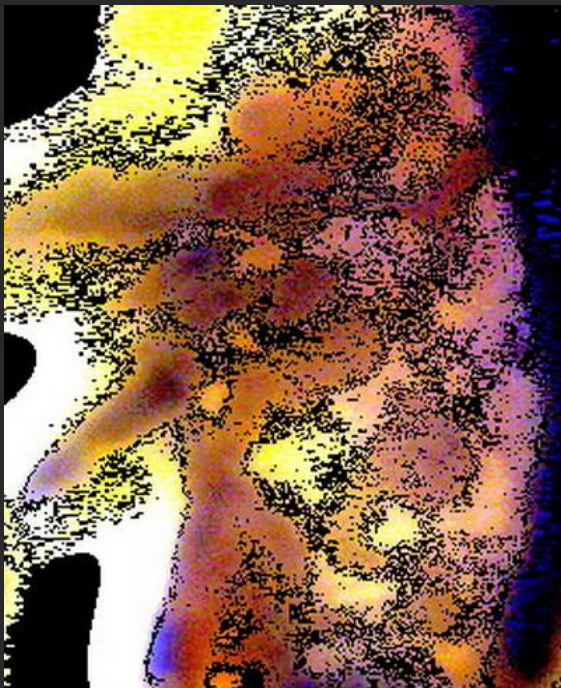
Here I've lightened the picture to try and see the picture more clearly but already other images are superseding the original larger one I wanted to showcase. If you spend a while looking at this perhaps you'll find some of them. The face is like a death's head



I used 'glowing edges' to highlight the image of the man in the middle of the picture. It has also pointed up some of the other more unclear faces for you to see. One interesting anomaly I noticed is under the face's chin, between it and the bottom of the picture. I spotted a shape that looked familiar and thought I could see two eyes. It's so faint I have to crop it out, but I can see it might be an owl, which is appropriate symbology, along with the skull-like face.



I've applied glowing edges to the image to outline the death's head features this apparition displays. The skull, complete with visible teeth, wears a hat with what look like eagle or hawk (birds of prey) feathers attached to it and has an owl as a companion, a bird associated with death in many cultures worldwide.



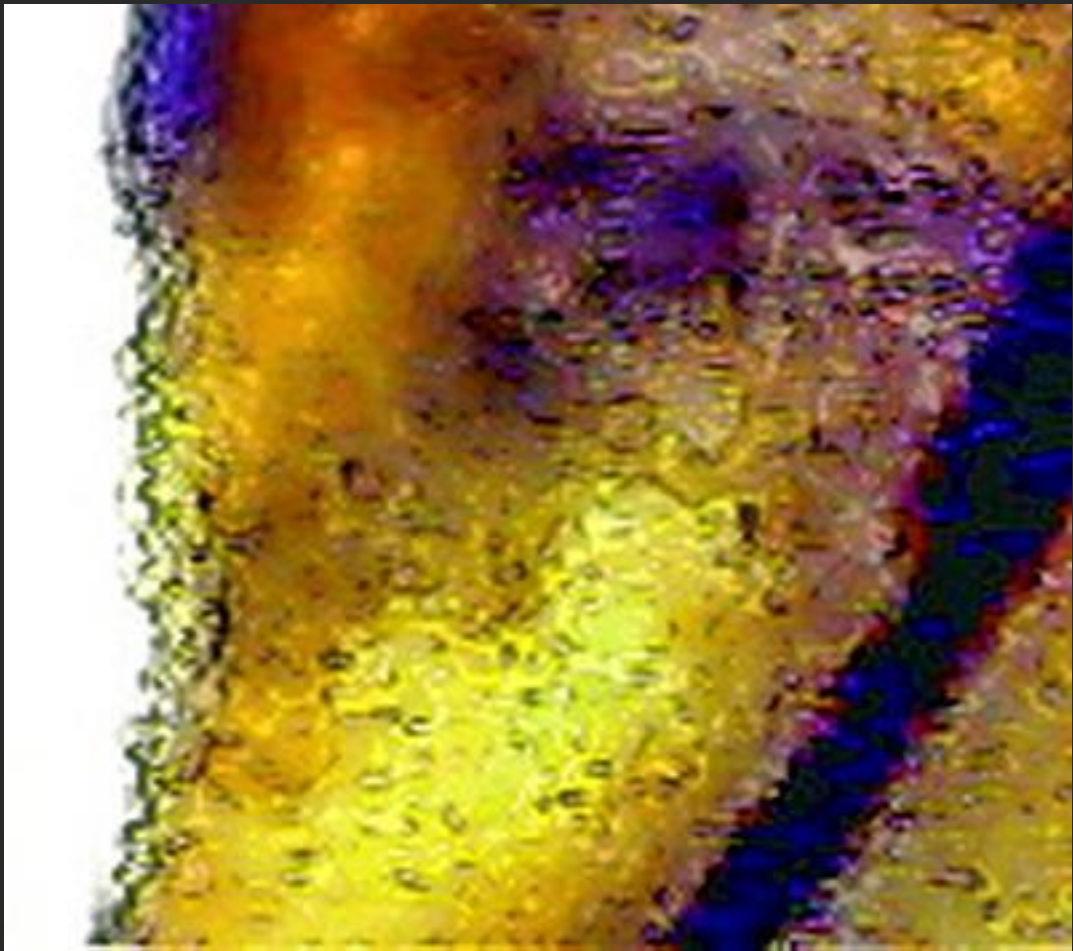
The image held a surprise, however, as it turned out to contain both the death-symbolizing skull and the features of the man's face which I was able to reveal a little through further careful editing.



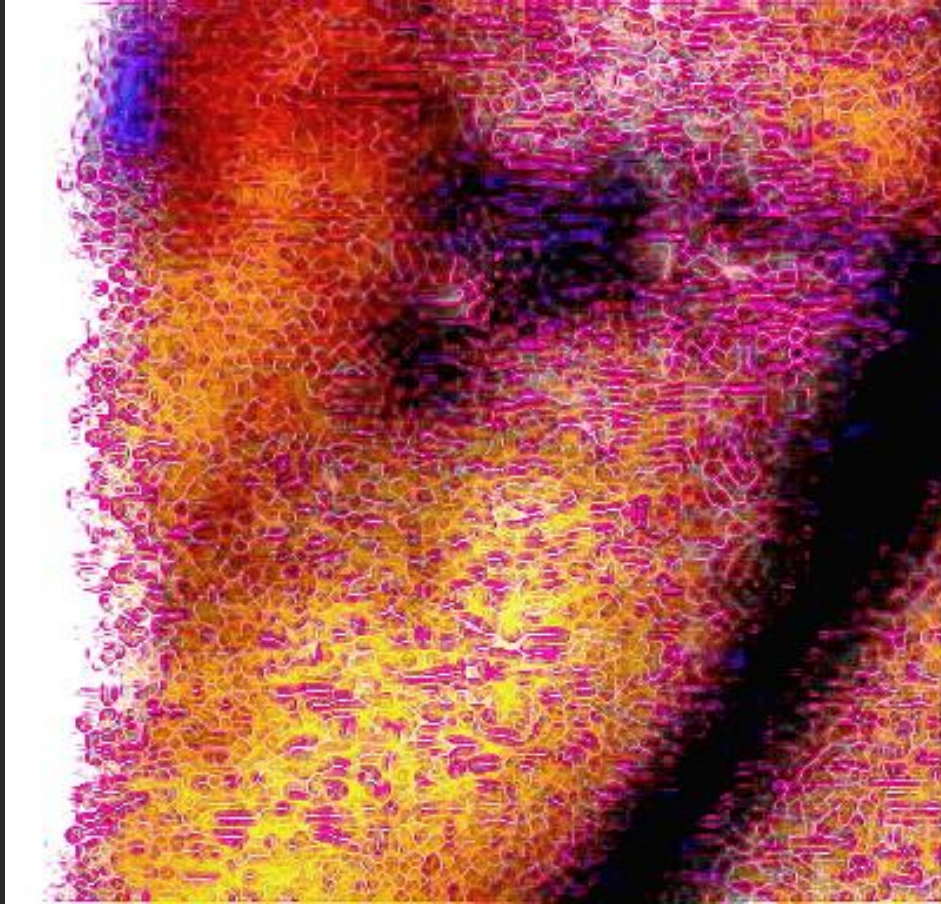
Here is the picture of this man's face in black and white. It may be faint, but it's certainly visible.



This is the image of the little owl, although it isn't yet very clear.



Another way of editing it reveals a little more.



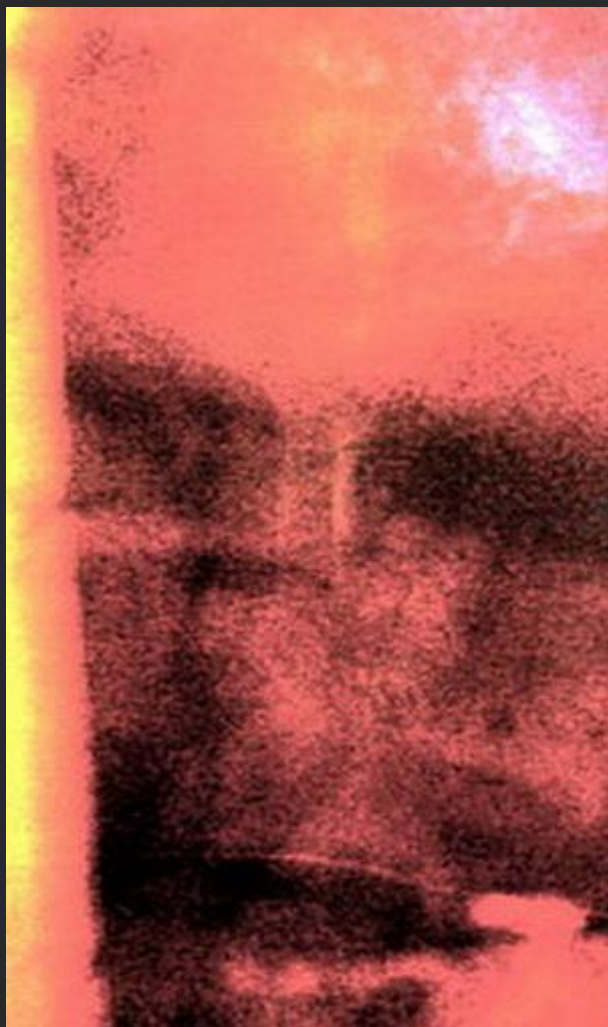
By edging it with a violet color (which proved to be the best choice to highlight this particular image), I am able to reveal it is an owl. Owls aren't by any means only associated with what we tend to view as negative events, such as death, but in this instance this one probably is.



The strange photograph you see is cropped from a photograph taken from inside a room where we used to live. It was getting dark outside and I took a shot of the window. It was obvious immediately that there were anomalies all over it. This image has already been edited so that you can see them. There is an interesting double image in this picture. The large orange-colored face in the bottom left hand corner of the window actually has another face superimposed over it, as I will show you. There are faces and eyes that can be seen already if you look carefully.



This is sharpened. At the moment you can't see the two layered faces. I'm going to show you them now, one at a time.



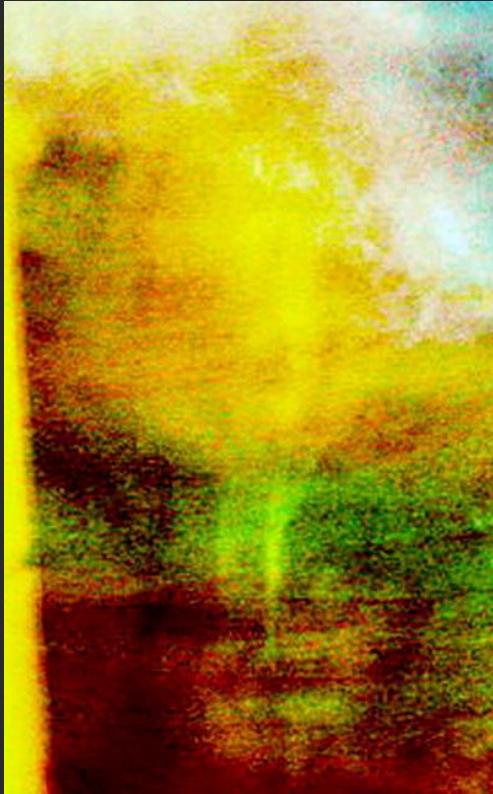
Here is the
first face,
peeping into
my
bedroom
window. For
once, the
entity is not
looking
directly at
me, as a lot
seem to do.
But what is
he looking
at?



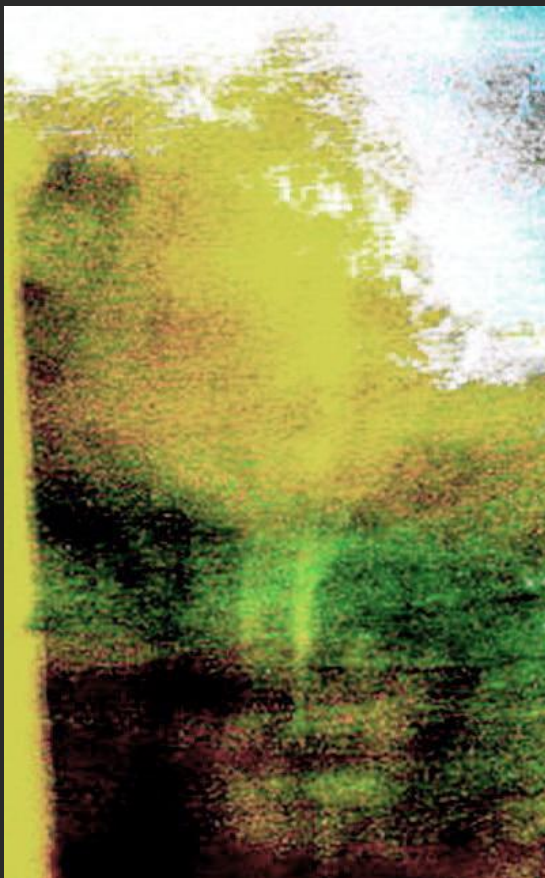
I've reduced
the red
color so it's
easier to
see. The
bedroom
was on the
second
floor, but
that's no
object to
this spirit.



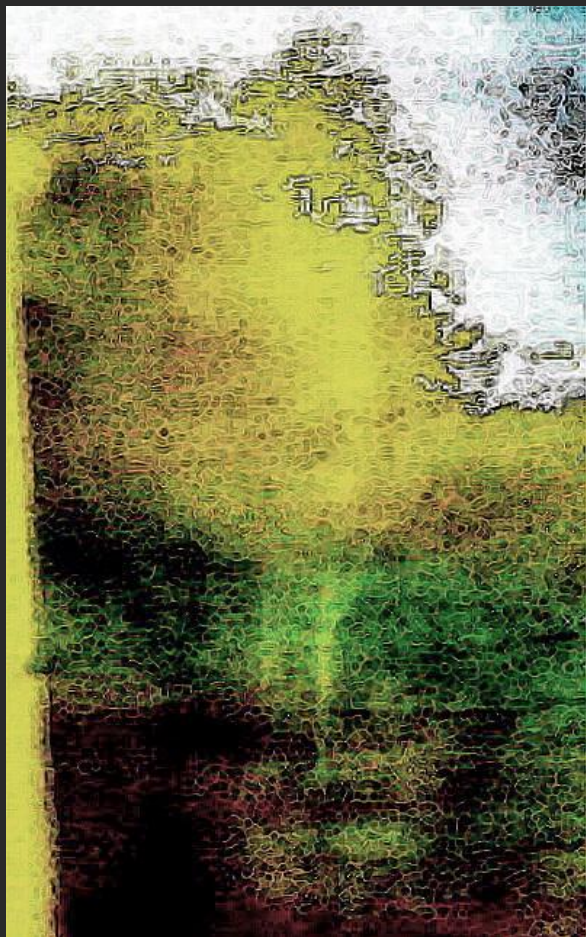
Sharpened, I can
see he's looking
intently down and
to the left of me
across the room,
but not at
someone else,
because I was
alone in the house
at the time. He
looks like a
human, which the
next face, which
shared space with
him, does not as I
will show you
next.



The second face, the one more prominently seen in the original image, is looking at me.



I've reduced the color and sharpened the image a little. He looks hostile, but I don't succumb to spirit bullying. Both these entities may be collecting information of some sort, perhaps using remote viewing, but there's no way to tell.



I've used
edges to fill
in the image
a little. I
would say
this entity is
in no way
human. We
share the
Multiverse
with many,
many types
of being.



This is a black
and white
version. Are we
ever truly
alone? I know
I'm not.



Cropped from a photograph taken into the woods, this one is full of faces. I'm going to edit the most obvious one, seen on the right side of the picture, about half way up.



Here's
the face,
a little
misty,
but that's
normal
for a
spirit
image.



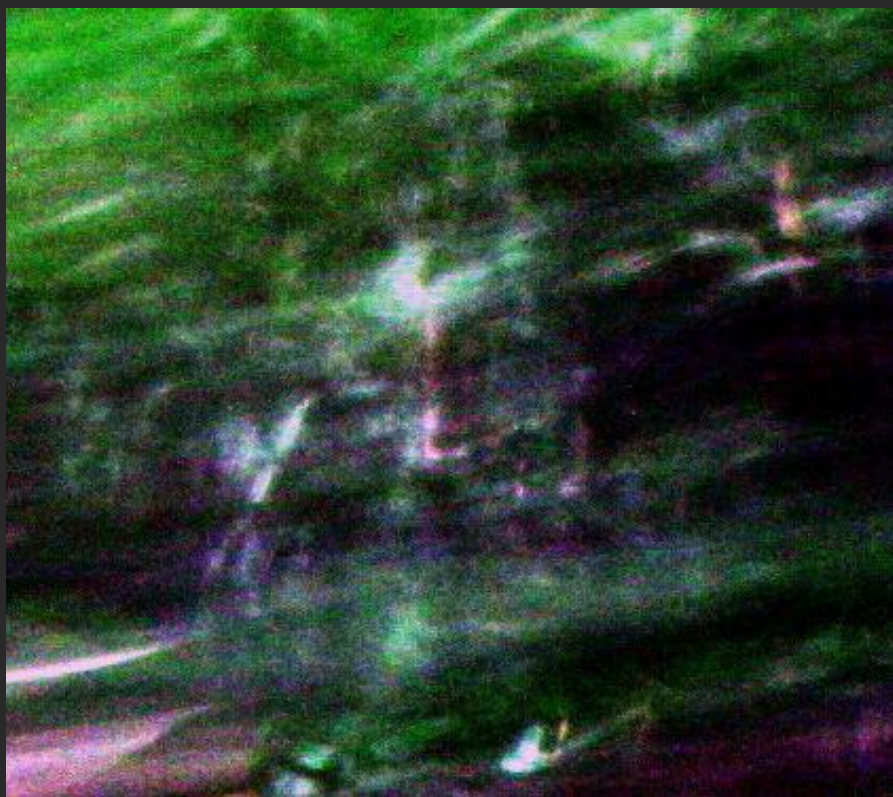
I've edited
it for color
contrast
and
exposure
and
sharpened
it as well.
The eyes
are more
visible.



I've
adjusted it
further. I'd
like to see if
this is a man
or a woman,
but I can't
tell.



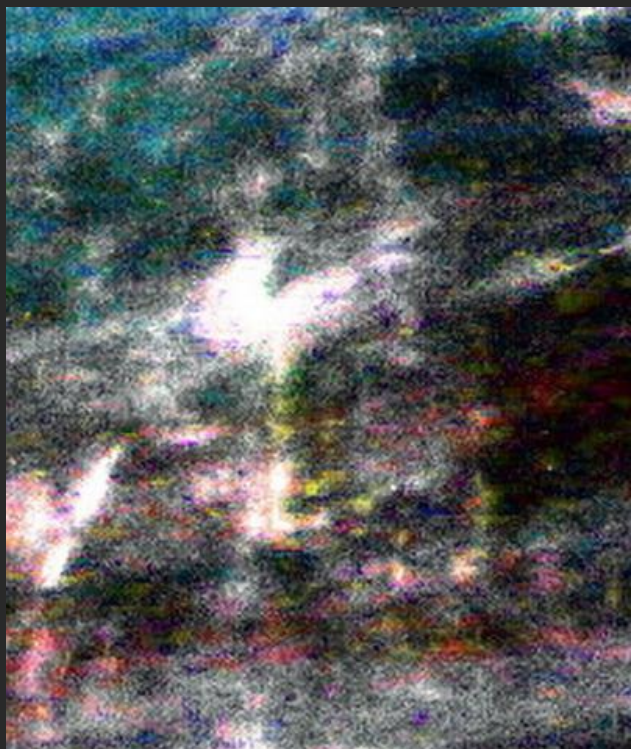
Applying edges in
an attempt to see
more is as far as I
can take this
partial image.
The face seems
gentle and
feminine, but I'm
not sure. I'll leave
it to my viewers
to decide.



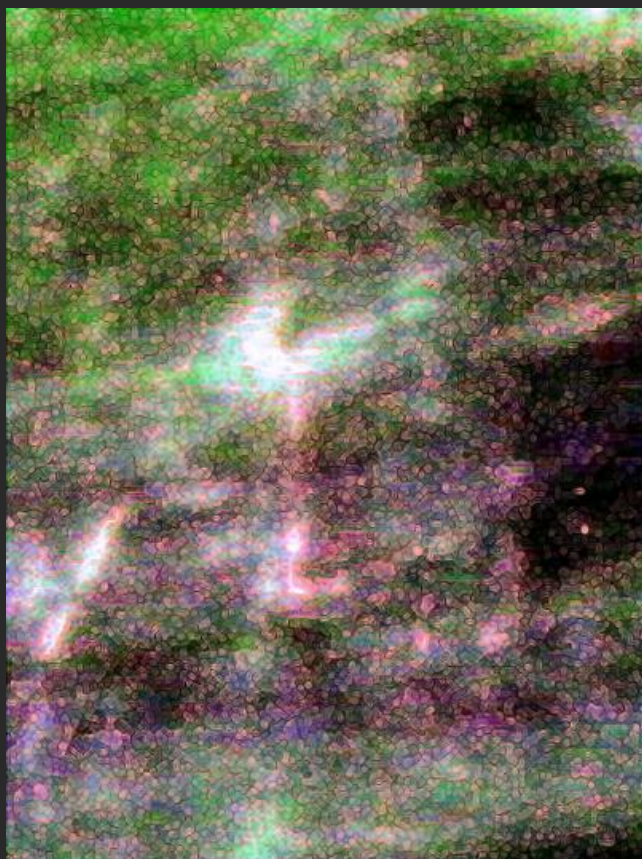
Also taken
in a wood,
despite
quite a few
other
anomalies
floating
around,
this vibrant
face stood
out to me.



The
cropped-
out face is
quite
apparent
but I'd like
to extract
more
details
from this
image.



I've attempted to see more by 'normalizing' the colors as far as possible. This often works quite well, as it has done in this instance.



I applied a light colored 'glowing edges' application. His curly hair is very visible.



This may actually be another candidate for the 'Musical Echoes' file, and I think I may spot a microphone and some more sound equipment, but it's too unclear. Edged like this version, it looks like an illustration.



This is the final edit shown in black and white. If anyone thinks they recognize this man, please email me and let me know. Can you see the interesting circular pattern of little marks in his left eye, viewed on the right?



A striking and beautiful image is visible on this otherwise poor photo taken into a wood while moving. There is what can only be described as a family portrait in purple here, but unfortunately only one face is visible. Let me show you more.



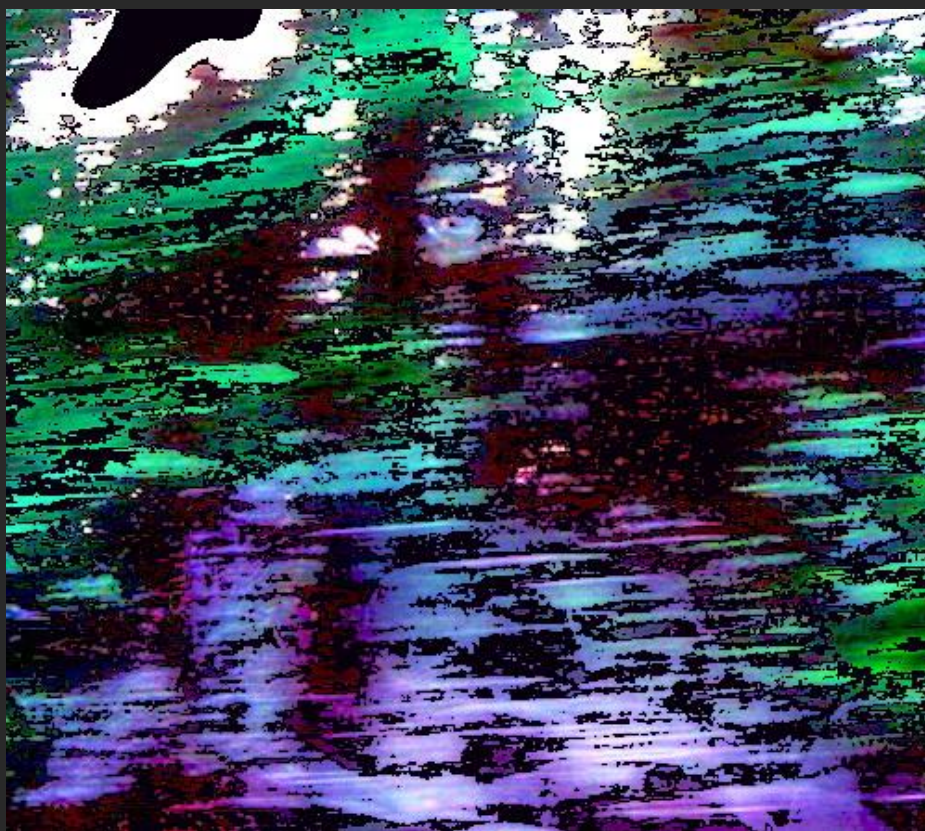
I've outlined the image so that you can see the area in question. There's something on the right side but it's too unclear to edit properly so I'll be dealing with the purple area seen in the bottom left quarter of the picture.



I've cropped the area in question and I'll describe to you what I discovered while editing it. You can probably already see the partial head that has materialized in the top middle half of the image. The eye is visible, and was obviously looking straight at me while I took the photograph. I consider this image to be deliberately posed and therefore symbolic. At the bottom of the picture you can see a lot of purple. Confusing at first to work out what it is we're looking at, it becomes clear when we realize that the purple marks are someone's arms. They appear to contain pictures or be tattooed.



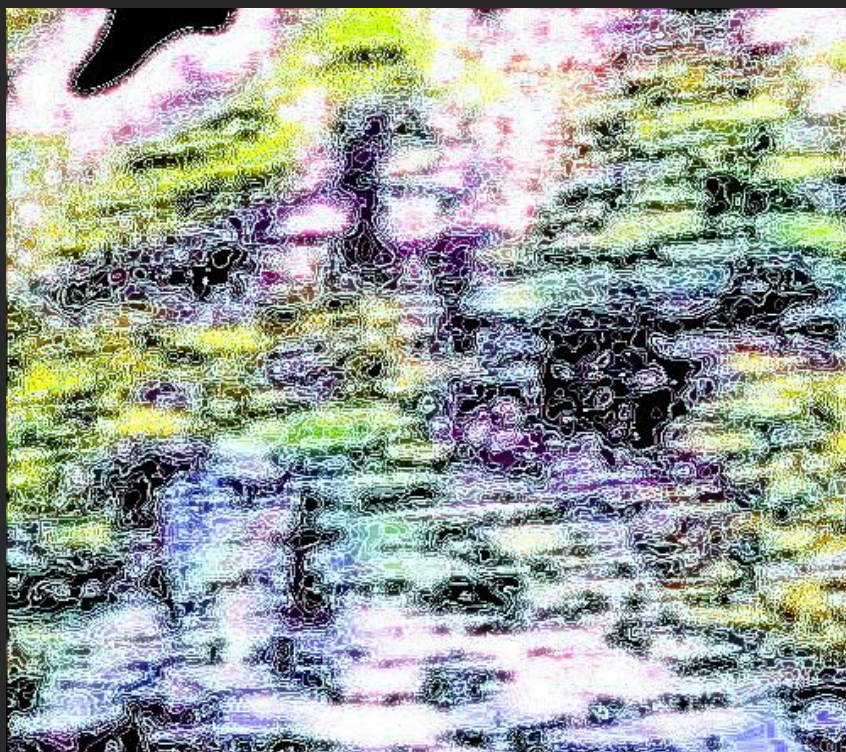
I've lightened the picture so you can see more. Starting at bottom left, the first purple mark may be a child's shoulder and upper arm, I can't tell, so I'll leave it. The next purple area along is the one of main interest, because it is clearly an arm. It appears to be covered in patterns or symbols, as though tattooed, and is held around something or someone else. It's difficult to see clearly what at this point, but I think they are heads. I also now think that another adult person is standing to the left of the head with the large and beautiful eye. I believe this person is shorter.



I've applied edges in black to try and outline this fascinating image. There do appear to be heads in the crook of the arm, as though children are being held protectively. This appears to be a close family group although I'm not sure how many people are present.



I've changed colors here in an attempt to see more. The heads at the bottom seem fairly clear.



By applying contours, I'm able to see quite a lot more finally. I adjusted the color until the image was at its clearest, and it happened to be blue-green. I can see now that there is a woman on the left, standing sideways and facing to the right. Her face is seen in profile and held close to the taller person, whose face with the amazing eye is only half visible. They both appear to have long dark hair. Clustered at the bottom of the picture are the faces of what I can reasonably assume might be their children. I think this is a First Nations family.



One of the strangest pictures I have, it leads me to think that someone met an unfortunate end nearby. Taken in an area of flatland fields I don't usually photograph in (I get better results around trees or indoors), I noticed something strange on the photo in a spot where some scrubby trees and bushes grew. I cropped and enlarged this very small image so I could look at it more closely. I notice that the area of interest is in the bottom half and looks sinister.



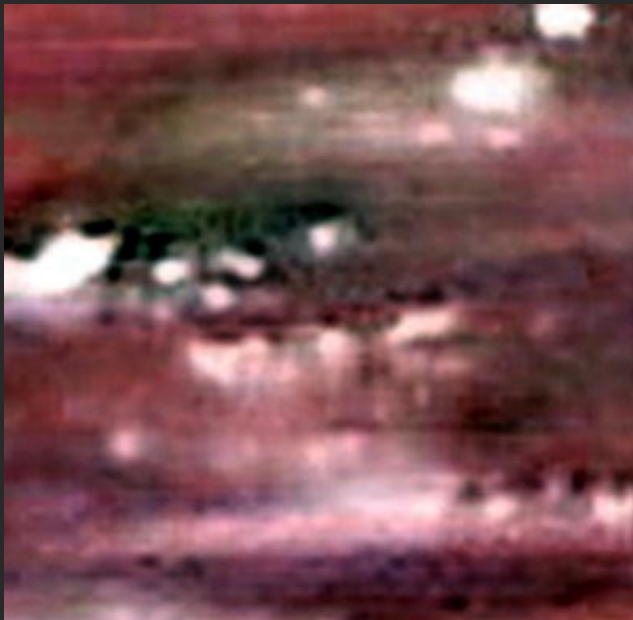
Re-cropping the disturbing image I see I was correct. There is no mistaking either the eye near top left or the clear image of the teeth near the bottom.



I've edged everything in black to point up the details, and perhaps now you can also see the smaller face just under and to the right of the eye at top left. I believe this is either a 'miniature' of the larger face we see that consists mainly of an eye and teeth, or is connected in some other way.



I've tried to 'normalize' flesh tones so I can see the faces better. The smaller face looks disturbingly like a child's.



The small face cropped. Most of the large eye can be seen at top left. This picture disturbed me because the idea of maybe two people meeting some sad end, perhaps one of them a child, is not good at all.



I've
edged
the
image
and this
is as clear
as I can
make it.



The teeth, cropped and enlarged, indicate
death to me



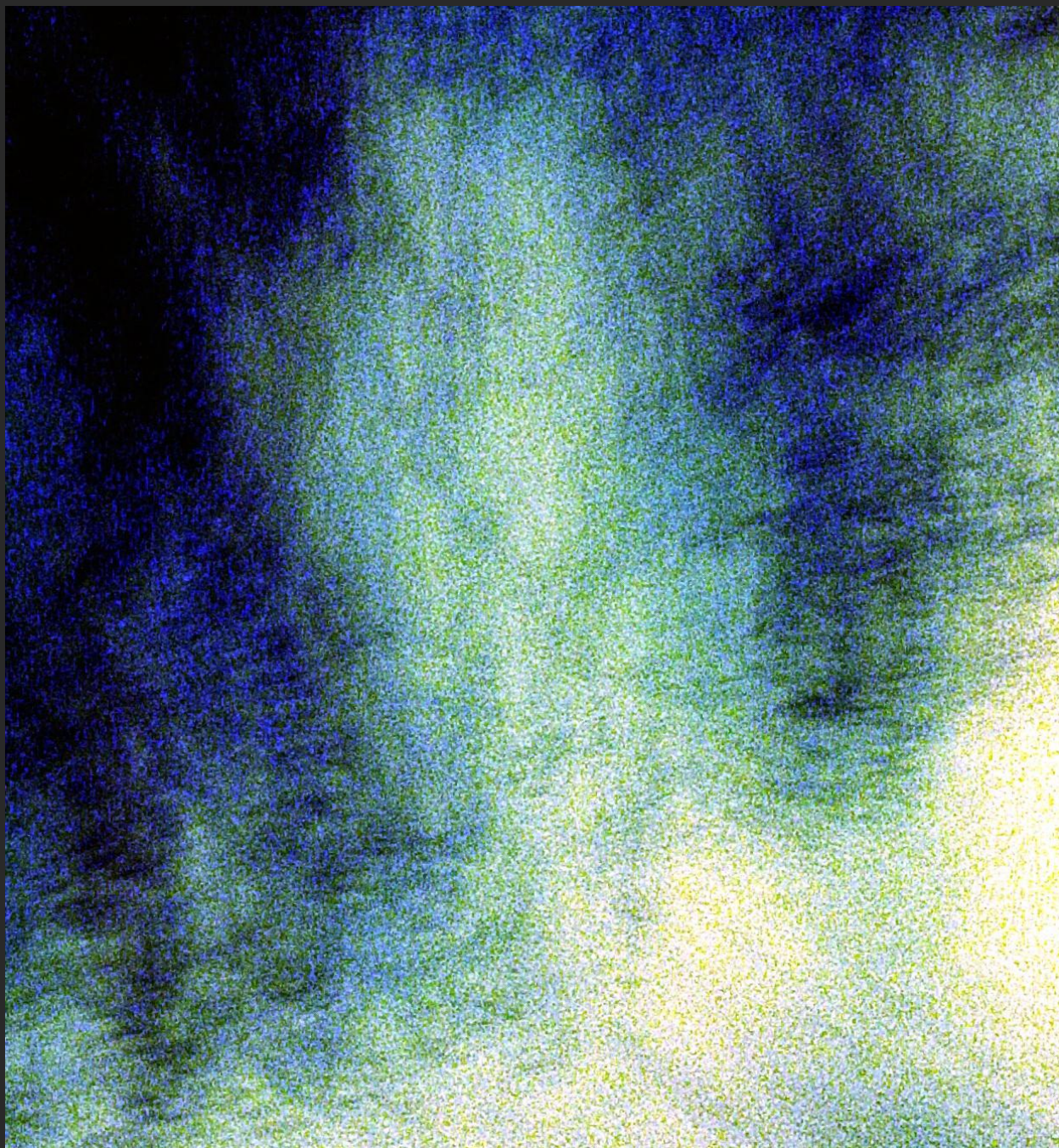
Seen in negative, the teeth can be seen almost as clearly as in a dental x-ray.



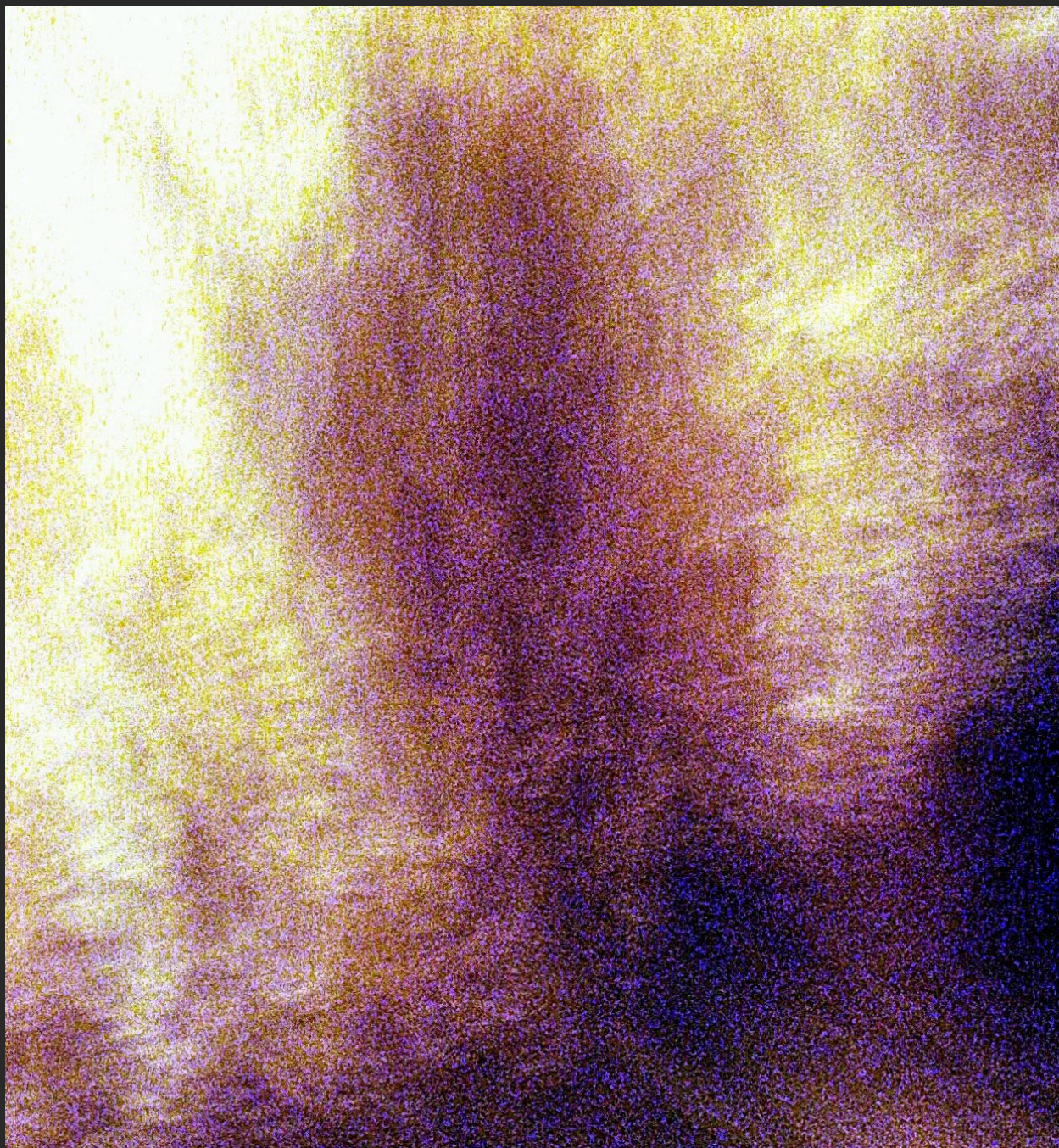
Edited a little further and sharpened, this final image speaks grimly of some dark incident. Also disturbing, I think I see a second set of teeth, visible directly above the first, and they look more like children's teeth. There's nothing that can be done about pictures like this. Even if they do depict real events, I'm photographing images interdimensionally, and there is no knowing when or where an incident took place. Some imagery is obviously modern, but I can present no evidence of its reality. What you are reading is my opinion only. This image could be very old, there's nothing to date it.



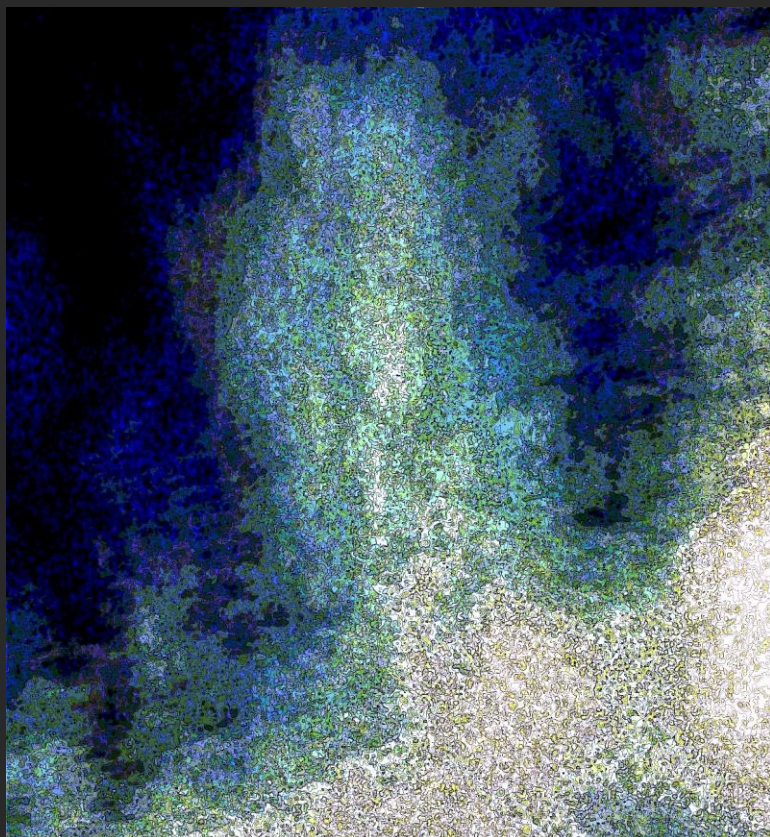
This face, cropped and enlarged considerably, was very tiny. It was found at a level of extreme pixilation, as you can observe. It might be impossible to recognize as a face, were it not for the startlingly clear brown eye seen on the left, just above the horizontal midline of the image. I've include this picture to demonstrate my discovery that imagery that shouldn't technically really be there at that level, frequently is. Often, further editing will suddenly reveal a detail with clarity, as you can see here.



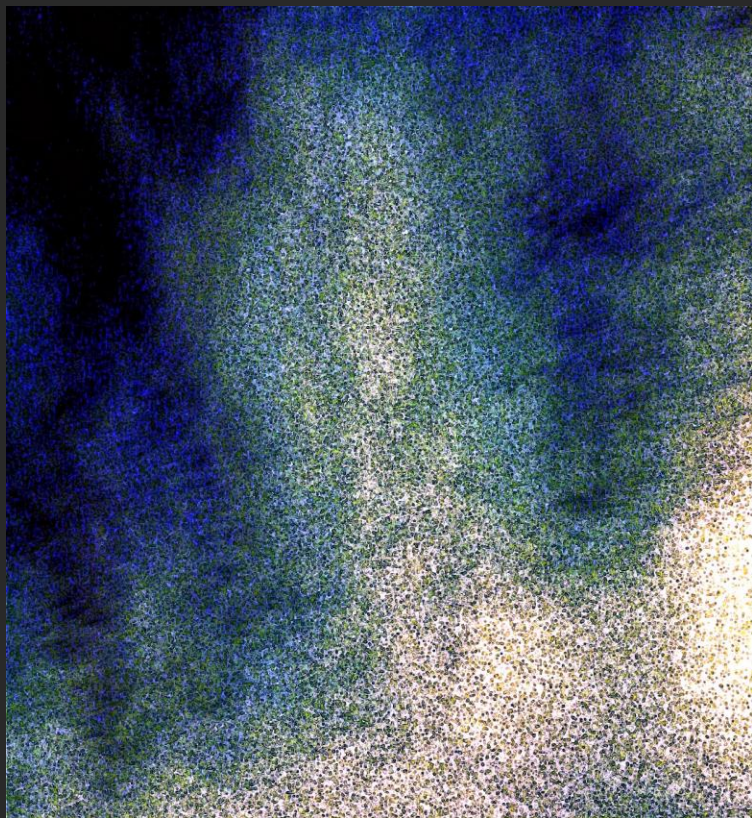
I've included for the final photo in this section an image that I found charming and uplifting. I took a shot of the sky as dusk was falling. When I looked at the sky I saw an extremely faint image in the clouds. In order to see it properly I had to edit and sharpen the image considerably. By the time I'd finished the image had the look of a delicate colored pencil drawing. Can you see the head in the middle of the picture? It has the look of a deity, perhaps Indian.



This is the negative version of the image. You can see the large head in the cloud formation looking down.



I applied a 'contours' program to the image to show the head's features, but it is extremely hard to reveal them any better than this.



I've used glowing edges to pick out the face, which although faint and delicate, is very lovely. The head extends upward into what would be an elaborate hair decoration or topknot. I can detect areas that might be decorative pieces such as necklaces and forehead and hair decorations, but they are too faint and grainy to properly edit any further.



You may have to look at this a few seconds to get your bearings, but it's worth it. Cropped and enlarged, you can still see how serene the eyes in this beautiful face are. Even though now reduced to dots like a pointillist painting, the face looks down from the evening sky like an Asian god in an illustration or sculpture.

Whether created by devotion, spirit, hologram, thoughtography, or any other means, the fact remains it was clear enough to photograph.

Jane Tripp can be emailed at: august12stargate@gmail.com

©Jane Tripp

www.janetripp.com